

BUILDING SAFER NEIGHBORHOODS THROUGH COMMUNITY PARTNERSHIPS



METROPOLITAN POLICE DEPARTMENT, CITY OF ST. LOUIS
2009 ANNUAL REPORT TO THE COMMUNITY



TABLE OF CONTENTS

2	Core Values/Mission Statement/ A Statement on the Value of Human Life
3	Law Enforcement Code of Ethics
5	Board of Police Commissioners
6	A Letter to the Community from Colonel Daniel Isom, Chief of Police
7	Deputy Chiefs of Police
8	Organizational Chart
11	2009: FOCUSING ON COMMUNITY OUTREACH
	Citizens Police Academy
	Books and Badges
	Officer Friendly
	Homicide Ministers Community Alliance
16	STATISTICAL DATA 2009
	Police Districts in the City of St. Louis
	Index Crime by Month & Annual Clearances
	Index Crime by District & Patrol Division
	UCR Part I Person Crime by Neighborhood Map
	UCR Part I Property Crime by Neighborhood Map
	Persons Arrested for Part I & Part II Offenses by Age & Sex
	Persons Arrested for Part I & Part II Offenses by Race
	Juveniles Arrested by District & Month
	Homicide Data
	Crime Snapshot
	Calls for Service/Directed Incidents by Division & Month & Hour
	911 Center Statistics
	Commissioned Officers by the Numbers
	Law Enforcement Officers Assaulted
	Internal Affairs Data
34	FISCAL YEAR 2009 FINANCIAL STATEMENT
	Grant Assistance
45	AWARDS 2009
	Medals of Valor, Distinguished Service Citations of Valor & Meritorious Service Citations
	Employees of the Year
48	FALLEN OFFICERS MEMORIAL
	P.O. Julius K. Moore
	Detective Gregory J. Erson
	In the Line of Duty
52	CREDITS

CORE VALUES

- SERVICE
- INTEGRITY
- LEADERSHIP
- FAIR TREATMENT TO ALL

MISSION STATEMENT

The mission of the Metropolitan Police Department, City of St. Louis, is to protect, serve and assist citizens when conditions arise that may affect the well being of the individual or the community. Cooperating with others in the community, officers will work to prevent and detect crime, protect life and property and achieve a peaceful society, free from the fear of crime and disorder. Members of the department will strive continually for excellence and maintain the peace through service, integrity, leadership and fair treatment to all.

STATEMENT ON THE VALUE OF HUMAN LIFE

The primary responsibility of this department and each of its members is to protect the lives of the citizens we are sworn to serve. It is also the duty of each member of the department to honor the established principles of democracy upon which this country was founded. Among these is the most profound reverence for human life, the value of which far exceeds that of any property. In view of this, it is essential that every action of this department and of each of its members be consistent with that responsibility.

In recognition, therefore, of the commitment of this department to the preservation of human life and because of the public trust which empowers sworn police officers to lawfully exercise force, even deadly force when required, in carrying out that commitment, it is hereby declared to be the policy of this department that (1) the use of deadly force will never be condoned as a routine response; and (2) police officers will exercise the highest degree of care in the application of such force.

LAW ENFORCEMENT CODE OF ETHICS

As a law enforcement officer, my fundamental duty is to serve the community; to safeguard lives and property; to protect the innocent against deception, the weak against oppression or intimidation and the peaceful against violence or disorder; and to respect the constitutional rights of all to liberty, equality and justice.

I will keep my private life unsullied as an example to all and will behave in a manner that does not bring discredit to me or to my agency. I will maintain courageous calm in the face of danger, scorn or ridicule; develop self-restraint; and be constantly mindful of the welfare of others. Honest in thought and deed both in my personal and official life, I will be exemplary in obeying the law and the regulations of my department. Whatever I see or hear of a confidential nature that is confided to me in my official capacity will be kept ever secret unless revelation is necessary in the performance of my duty.

I will never act officiously or permit personal feelings, prejudices, political beliefs, aspirations, animosities or friendships to influence my decisions. With no compromise for crime and with relentless prosecution of criminals, I will enforce the law courteously and appropriately without fear or favor, malice or ill will, never employing unnecessary force of violence and never accepting gratuities.

I recognize the badge of my office as a symbol of public faith, and I accept it as a public trust to be held so long as I am true to the ethics of police service. I will never engage in acts of corruption or bribery nor will I condone such acts by other police officers. I will cooperate with all legally authorized agencies and their representatives in the pursuit of justice.

I know that I alone am responsible for my own standard of professional performance and will take every reasonable opportunity to enhance and improve my level of knowledge and competence.

I will constantly strive to achieve these objectives and ideals, dedicating myself to my chosen profession...law enforcement.





2009 BOARD OF POLICE COMMISSIONERS



COLONEL TODD H. EPSTEN
President

Sworn in: 2008 | Term expires: 2012



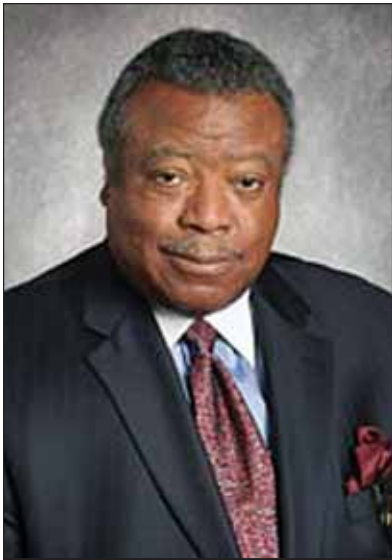
COLONEL BETTYE BATTLE-TURNER
Vice President

Sworn in: 2009 | Term expires: 2013



COLONEL VINCENT J. BOMMARITO
Treasurer

Sworn in: 2007 | Term expires: 2011



COLONEL JULIUS K. HUNTER
Member

Sworn in: 2007 | Term expires: 2010



MAYOR FRANCIS G. SLAY
Ex-Officio Member



LIEUTENANT COLONEL
DAVID R. HEATH
Secretary to the Board

A LETTER TO THE COMMUNITY FROM COLONEL DANIEL ISOM, CHIEF OF POLICE



Upon being selected as Chief of Police in October 2008, I was directed to develop a strategic plan focused on managing the business of the Metropolitan Police Department. I immediately held a two-day retreat with the executive leadership of the department and together we developed a

strategic plan. That plan, delivered to the Board of Police Commissioners in November, was the first of its kind in the department's history. It focused on four areas: managing the business of the police department, decentralization, technology and career development.

In July 2009, in an effort to hold myself accountable for the items outlined in the strategic plan, I held a one-day retreat with the executive leadership of the department to define the objectives that were successfully completed, those that needed additional attention and to develop even more goals to improve the management of the department. In assessing the first strategic plan, 90 percent of the plan was accomplished, with the remaining 10 percent needing to be refined with new objectives and deadlines. Two additional focus areas were developed at this second retreat: managing crime and managing image and integrity. An expanded version of the strategic plan was then delivered to the Board of Police Commissioners in August.

I am proud to announce that we have made much progress. The executive leadership is cohesive, focused and engaged in implementing the strategic plan and the new direction of the police department.

One of the most important decisions we made was to conduct the first Citizen Satisfaction Survey in the department's history. The results showed that while most citizens were satisfied with the department's efforts overall, many of those same citizens wanted the police department to build stronger community partnerships. We agreed and responded by making 2009 a year focused on community outreach. We addressed the requests of citizens by reinstating several community outreach programs such as the

Citizens Police Academy to allow citizens to learn more about the department and Books & Badges to help police recruits begin to build relationships with the youngest citizens we serve—children. In addition to programs, we also unveiled a completely redesigned website with more than 70 pages of information, crime statistics and resources. We also pledged to help increase the number of Neighborhood Watch groups, empowering citizens to become involved in efforts to protect their streets and their community. I hope our actions have shown that we are committed to responding to the community's needs. Yet we know our work is never finished. Community outreach involves ongoing efforts, not one-time fixes. We will continue to work each day on building relationships with the citizens of St. Louis.

While we focused on community outreach, managing the business aspects of the department, decentralization, improving technology and career development, we never forgot that our primary purpose is to solve and attempt to prevent crime. In 2009, the City of St. Louis saw an overall decrease in crime of 5.5 percent as compared to 2008. This was despite the fact that we had fewer officers, a decreased budget, reduced benefits, decreased pay due to higher contributions to medical insurance and the worst recession in American history to date. This decrease in overall crime is a testament to the men and women of this department. I am confident that we have some of the best police officers and civilian employees of any police department in the nation and I am confident that this police department is 100 percent more efficient and focused than it was just one year ago.

We are continuing to assess risks, devise solutions and prioritize our courses of action to address immediate concerns facing the department. While there are many challenges ahead, the department remains committed to our mission of protecting and serving citizens and reducing crime in the St. Louis community. We are leaving no stone unturned.

Sincerely,

Colonel Daniel Isom
Chief of Police

DEPUTY CHIEFS OF POLICE



LIEUTENANT COLONEL ALFRED J. ADKINS

Lt. Col. Adkins serves as Commander of the Bureau of Investigation & Support. He oversees Crimes Against Persons and Property, which includes Homicide, Sex Crimes, Child Abuse, Domestic Abuse, Bombing & Arson, Fraud and Cyber Crimes. He also oversees Tactical Enforcement including Narcotics, the Violent Offenders Unit, Anti-Crime Unit, Warrant & Fugitive Unit and Prisoner Processing. Support Operations, which consists of Traffic Safety, Mounted Patrol, Mobile Reserve, Canine, Emergency Management, Aviation and Public Transportation, also falls within Col. Adkins' bureau.



LIEUTENANT COLONEL ANTOINETTE M. FILLA

Lt. Col. Filla serves as Commander of the Bureau of Community Policing, which is the largest bureau within the department. She oversees a budget of approximately \$35 million and supervises more than 1,000 commissioned officers and civilian employees. The Bureau of Community Policing includes the nine Police Districts, the District Detectives, the Crime Analysis Unit, the Housing Unit and those police officers assigned to the Circuit Attorney's Office as investigators.



LIEUTENANT COLONEL REGGIE L. HARRIS

Lt. Col. Harris serves as Commander of the Bureau of Professional Standards. He oversees the Police Academy, Audit Advisory Unit, Library, Private Security, Human Resources and the Commission on Accreditation for Law Enforcement Agencies (CALEA). He also serves as the Inspector of Police, responsible for investigations of complaints brought against department employees. The Bureau of Professional Standards is also responsible for ongoing training of all department employees.



LIEUTENANT COLONEL PAUL M. NOCCHIERO

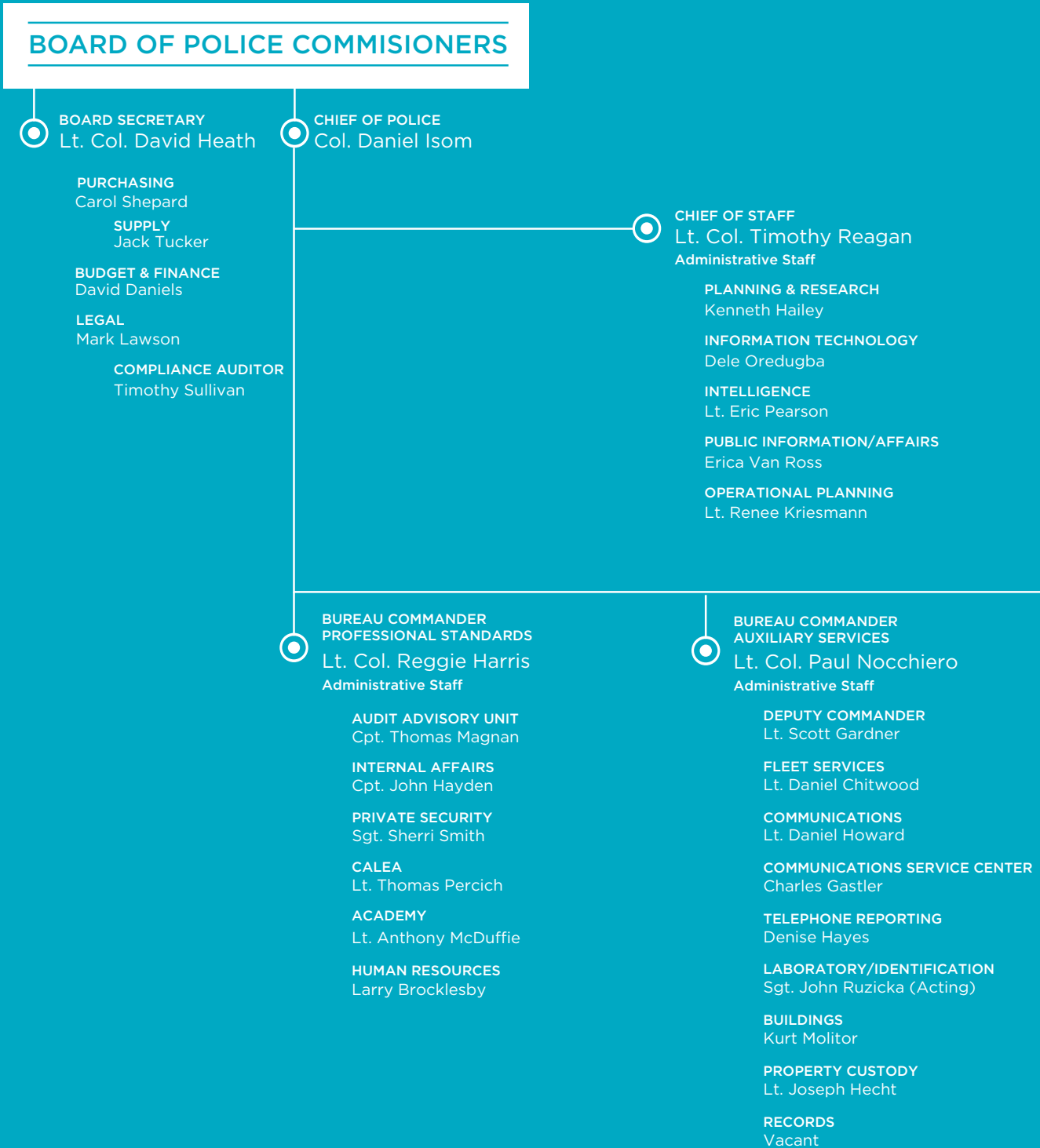
Lt. Col. Nocchiero serves as Commander of the Bureau of Auxiliary Services. He oversees a budget of approximately \$22 million and supervises 350 employees assigned to the bureau, which includes Communications, the Crime Laboratory, Property Custody, Records Division and Telephone Reporting. He is also responsible for overseeing all police facilities and the maintenance of both the police radio system and the department's fleet.



LIEUTENANT COLONEL TIMOTHY E. REAGAN

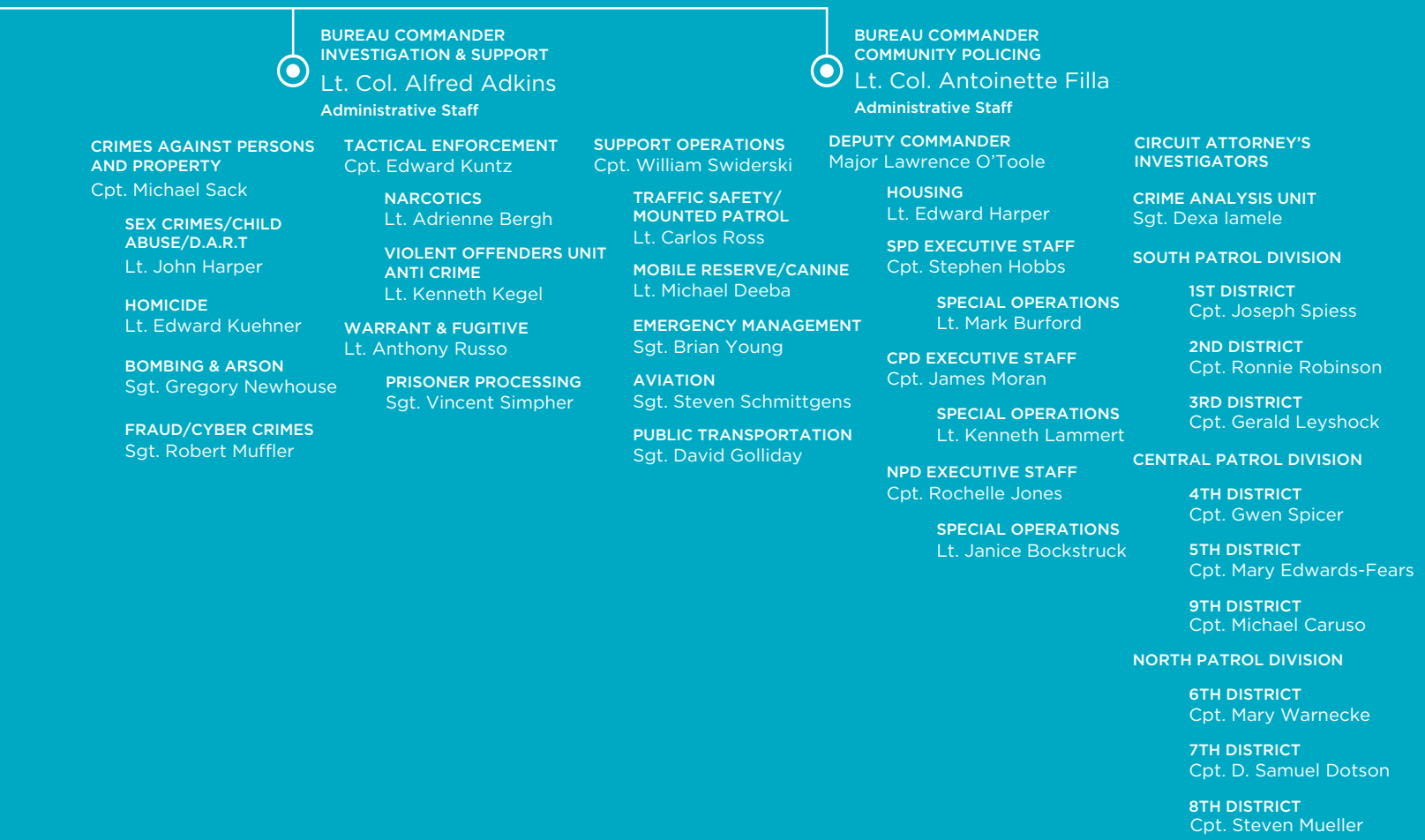
Lt. Col. Reagan serves as Chief of Staff in the Office of the Chief of Police. He serves as the top advisor to the Chief of Police. He also oversees Planning & Research, Information Technology, Intelligence, Public Information and Operational Planning.

METROPOLITAN POLICE DEPARTMENT ORGANIZATIONAL CHART



ORGANIZATIONAL CHART*

* As of 12/31/09





FOCUSING ON COMMUNITY OUTREACH

2009

In 2009, Chief Isom and the Metropolitan Police Department, City of St. Louis conducted its first ever Citizen Satisfaction Survey. The telephone survey of 900 city residents was conducted by Wilson Research Strategies. The company administered similar surveys for law enforcement agencies in Tennessee, Texas, South Carolina, Washington D.C. and California. The department's main objectives were to find out what citizens believed the department was doing well and to identify areas that citizens wanted the department to improve upon. The results indicated that 75 percent of citizens were satisfied with the department overall. Most citizens said they feel safe in their neighborhoods and were satisfied with the department's efforts to reduce crime. However, citizens indicated one area in particular that needed improvement—community outreach. Citizens indicated they wanted more opportunities to work with law enforcement and build stronger community partnerships. Chief Isom responded to these concerns when he re-branded Public Affairs Officers as Community Outreach Officers, launched a new and improved website that includes more than 70 pages of helpful information and neighborhood resources for citizens, reinstated several community outreach programs and implemented one new program. Returning were the Citizens Police Academy, Books & Badges and Officer Friendly. The new program is the Homicide, Ministers & Community Alliance. It is a partnership between the department's Homicide Division, area pastors and various community resource organizations. The department's community outreach efforts continue, with the knowledge that building relationships can have a profound impact on building an even safer St. Louis.

CITIZENS POLICE ACADEMY



Members of the Citizens Police Academy listen to a class presentation

Interest in the Citizens Police Academy skyrocketed when the program made its return in 2009 following a four year hiatus. While the 2005 class was comprised of less than 10 students, more than 100 city residents and business owners applied for the 30 available spaces in the 2009 class.

The program is designed to open the lines of communication between the department and the community, providing citizens with a more comprehensive understanding of all aspects of police work. The ten-week course includes 36 hours of instruction, with most classes being taught by police officers. Citizens gain a better understanding of the inner workings of the department through instruction in the department's history and structure, predicting and analyzing crime patterns, gang intelligence, homicide investigations and community policing techniques, among other things.

Participants have the opportunity to interact with police officers and are given a glimpse into the world of law enforcement as seen through the eyes of the men and women who perform the job. Students in the course also see the police bomb robot and police canines in action during demonstrations at the Police Academy. Other activities during the ten-week course include a tour of the 911 call center and use of the driving and shooting simulators.



Shooting simulator demonstration

The Citizens Police Academy has proven to be a great tool in building bridges between police and the community. The participants enter the academy with little knowledge of how the police department works, but leave with an understanding of the law enforcement community. The graduates of the program are empowered with knowledge to help others in the community communicate more effectively with the police department, but the program's benefits do not end there. The alumni of the Citizens Police Academy have expressed interest in volunteering within the police department, applying their knowledge and relationships for years to come, in an effort to better the department and the community.

BOOKS & BADGES

In response to citizens' requests for more community involvement, the department reinstated the St. Louis Police Academy's Books & Badges program in 2009. The innovative partnership between the St. Louis Police Academy and the St. Louis Public School District provides a unique learning experience for elementary school students and police recruits alike.

Police recruits spend several hours each month reading and writing with students at select elementary schools. Each police recruit is partnered with one child. Working together for the duration of the 28-week training of the Police Academy, the recruit and student build a bond that helps both.

While the primary goal of Books & Badges is to improve language skills of the students and to teach them how important reading is to their success, recruits have found that the program helps children to understand the value of police officers. Some children admit that their perception of police officers prior to Books & Badges involved negative images, but the relationships they develop with their recruit help change their overall perception of police.

Near the end of the 28-week recruit training period, there is a bit of role reversal in the Books & Badges program as the students visit the recruits at the Police Academy. It offers the students an opportunity to see their recruit in the classroom and in physical training. The students also try their hand at some of the physical challenges the recruits endure daily. The visit reinforces the idea that learning is not just something young people engage in, but is actually a lifelong process. Seeing the police recruits in the Police Academy environment also strengthens the bond between the recruit and the student.

The department first began the program in 2003, hoping to establish open and honest communication while building positive and meaningful relationships with



Police recruits Daniel Chamblin and Masood Khan work with students at Sigel Elementary School.



Books & Badges students visit recruits at the Police Academy

young people in the community. After several years, the department ended its participation in the program in an effort to shorten the weeks of training at the Police Academy. Participation in Books & Badges extended the Police Academy training as it requires recruits to make a serious time commitment to the child they are assigned. Following requests from citizens for the department to make broader efforts at community outreach, as well as department leaders' own recognition that building bonds with the youngest St. Louisans could indeed have a significant impact, Books and Badges made its return and has become more valuable than ever.

Recruits have found that often the relationships built during the program extend well beyond the timeframe of Books & Badges. Some recruits invite their students to attend the recruit graduation, marking the first time students see the recruits in police uniforms. Seeing the recruit receive a badge and become a full fledged police officer cements the Books & Badges experience. Many recruits voluntarily continue to mentor their students for years to come. Their decision to do so is proof that Books & Badges is a community partnership with a lasting impact and proof that such partnerships can absolutely be built one relationship at a time.

OFFICER FRIENDLY



Lexington Elementary School



Farragut Elementary School

After a long hiatus, Officer Friendly was dispatched to St. Louis Public Schools armed with lessons about safety. Officer Friendly, a Metropolitan Police Department Police Officer, makes weekly visits to area elementary school students.

The overall goal of the program is to emphasize to children that police officers are their friends. The program is used as a tool to teach children about the dangers they face and to help them understand police officers can be helpful in many dangerous situations.

Officer Friendly made its debut in other parts of the country in the 1960s, but first came to St. Louis in the 1970s. The program continued through the 1990s before it was abandoned. Then in 2009, after the results of the Citizen Satisfaction Survey indicated St. Louisans wanted the department to focus on more opportunities for positive interactions between the police and the community, Officer Friendly made a welcome return, beginning with the St. Louis Public Schools. Community Outreach Officers assigned to each of the nine police districts serve as Officer Friendly, traveling to schools within their patrol districts. Talking with children, police officers visit classrooms and discuss traffic safety, stranger danger, bicycle safety and 911, among other things. At the end of each safety presentation, students are given a “Play it Safe” coloring book to take home. The goal is for children to share the book with family members as a means of reinforcing what the child learned.

The Officer Friendly program was well received upon its return, giving the department high hopes of one day expanding it to even more schools and ultimately reaching even more children throughout the City of St. Louis.



Nance Elementary

HOMICIDE, MINISTERS & COMMUNITY ALLIANCE (HMCA)

A HOMICIDE VICTIM FAMILY ADVOCACY INITIATIVE “REBUILDING RELATIONSHIPS ONE FAMILY AT A TIME”

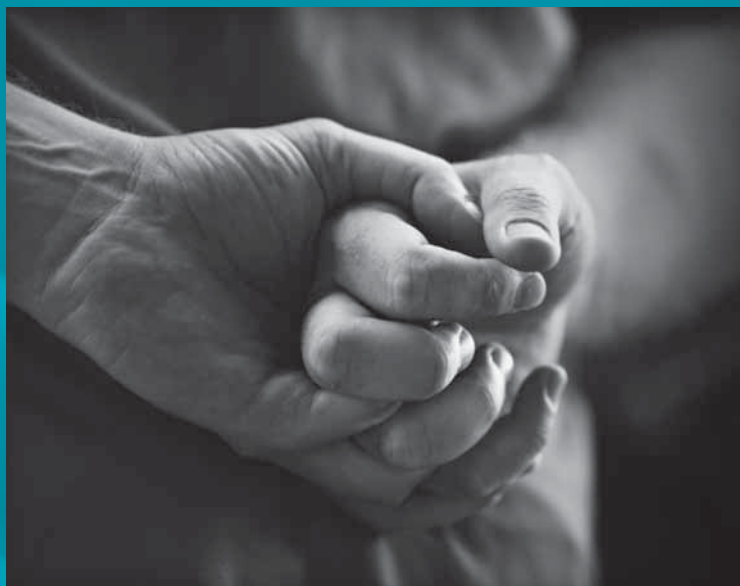
In 2009, the Homicide Division of the Metropolitan Police Department, City of St. Louis, partnered with St. Louis area pastors and various community resource organizations to form the Homicide, Ministers & Community Alliance (HMCA). The program’s primary goals are to provide sensitivity and support to the families of homicide victims, to rebuild and strengthen relationships between the community and the police department and to reduce the likelihood of retaliation.

The HMCA offers a variety of assistance to families in need, including: spiritual counseling, guidance regarding payment of funeral expenses, relocation assistance for at-risk families, presiding over funeral or memorial services, transportation and post-incident counseling.

After a homicide is reported, the Homicide Division contacts the HMCA coordinator, who then contacts the on-call minister. Together, the coordinator and on-call minister schedule a personal visit with the homicide victim’s family. The minister offers spiritual advice and counseling and is assigned to the victim’s family during the bereavement period.

Retired Police Lieutenant Fred Turner, a 36-year veteran of the Metropolitan Police Department and former commander of the department’s Homicide Division, approached Chief Isom about forming the alliance. Lt. Turner serves as volunteer coordinator of the HMCA. His knowledge and years of experience aid the organization in identifying the immediate needs of the families of homicide victims.

The work of the HMCA has been a valuable asset to both the community and the police department. Many



people who admit that they previously were unwilling to work with police, now express a desire to do so thanks to the relationships developed with the help of the HMCA. The HMCA has successfully convinced family and friends of victims to provide information to police and several arrests can be attributed to that information. Investigators also believe the HMCA can be credited with helping to decrease retaliatory violence as well.

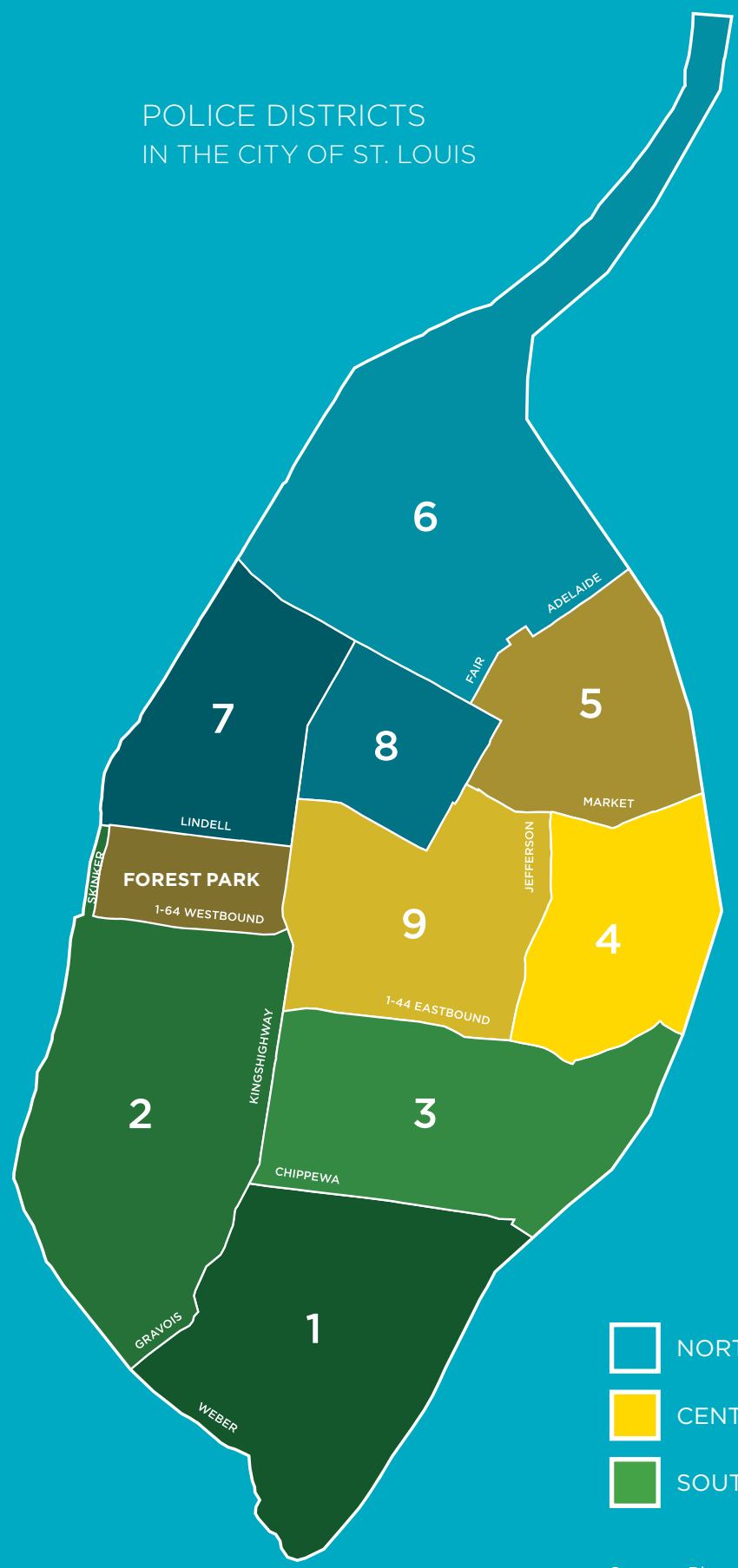
This initiative is one more example of the department’s commitment to building bridges between police and the community and truly rebuilding relationships one family at a time. The department values the work of the HMCA and looks forward to the continued partnership with the organization and the community.

STATISTICAL DATA

2009



POLICE DISTRICTS IN THE CITY OF ST. LOUIS



- NORTH PATROL
- CENTRAL PATROL
- SOUTH PATROL

Source: Planning & Technology

INDEX CRIME

BY MONTH & ANNUAL CLEARANCES | JAN. 01 - DEC. 31, 2009

CRIME	JAN	FEB	MAR	APR	MAY	JUN	JUL	AUG	SEP	OCT	NOV	DEC	TOTAL	CLEARED BY ARREST	PERCENT CLEARED
Total Index Crime	2,725	2,259	2,866	2,828	3,023	3,219	3,522	3,518	3,409	3,564	3,405	2,865	37,203	6,522	17.5%
Percent	7.3%	6.1%	7.7%	7.6%	8.1%	8.7%	9.5%	9.5%	9.2%	9.6%	9.2%	7.7%	100.0%		
Murder	5	9	10	8	16	12	10	15	13	22	15	8	143	99	69.2%
Total Rape	15	16	16	31	19	20	33	22	18	23	18	19	250	180	72.0%
Forcible Rape	14	16	16	28	18	19	28	20	17	22	16	15	229	165	72.1%
Rape Attempts	1	0	0	3	1	1	5	2	1	1	2	4	21	15	71.4%
Total Robbery	203	164	206	264	282	231	263	229	192	245	238	204	2,721	661	24.3%
Highway	157	139	166	222	239	197	212	185	161	192	203	165	2,238	462	20.6%
Business	25	5	15	18	21	24	31	22	17	23	19	25	245	90	36.7%
Miscellaneous	21	20	25	24	22	10	20	22	14	30	16	14	238	109	45.8%
Weapon**	148	96	131	181	213	156	179	151	135	167	166	153	1,876	401	21.4%
No Weapon**	55	68	75	83	69	75	84	78	57	78	72	51	845	260	30.8%
Total Agg. Assault	292	305	446	401	414	394	359	357	391	316	349	215	4,239	2,237	52.8%
Gun	164	167	250	223	235	194	174	175	199	169	201	118	2,269	801	35.3%
Knife/Cutting Instrument	43	37	59	45	41	55	68	54	51	42	33	36	564	455	80.7%
Other Weapon	62	82	104	104	113	117	96	104	106	88	87	52	1,115	794	71.2%
Hands,Feet,Fist,Etc.	23	19	33	29	25	28	21	24	35	17	28	9	291	187	64.3%
Other Assaults*	399	508	577	588	700	587	542	588	539	459	440	413	6,340	4,486	70.8%
Total Burglary	481	376	538	510	540	548	675	657	574	570	699	666	6,834	1,024	15.0%
Residence Day	161	153	185	180	214	173	238	206	172	215	245	272	2,414	472	19.6%
Residence Night	230	152	264	219	212	250	302	318	294	251	80	67	2,639	360	13.6%
Residence Time Unknown##	0	0									285	241	526	32	6.1%
Business Day	8	3	7	13	14	6	10	8	9	8	6	5	97	21	21.6%
Business Night	52	37	45	63	49	42	53	53	47	53	29	25	548	75	13.7%
Business Time Unknown##											26	31	57	6	10.5%
Other Day	5	4	7	11	11	20	4	16	9	13	9	9	118	16	13.6%
Other Night	25	27	30	24	40	57	68	56	43	30	3	4	407	41	10.1%
Other Time Unknown##											16	12	28	1	3.6%
Forcible Entry**	306	244	338	328	358	343	429	416	364	387	482	495	4,490	675	15.0%
No Force Entry**	142	109	170	156	147	172	203	208	175	148	182	146	1,958	290	14.8%
Attempted**	33	23	30	26	35	33	43	33	35	35	35	25	386	59	15.3%
Total Larceny	1,284	1,063	1,293	1,270	1,373	1,575	1,680	1,769	1,799	1,816	1,571	1,306	17,799	2,022	11.4%
Pickpocket	6	1	1	1	6	2	7	2	0	2	3	2	33	1	3.0%
Purse Snatching	4	2	7	5	3	2	6	3	5	6	8	5	56	7	12.5%
Shoplifting	98	86	127	140	142	154	150	149	137	156	142	138	1,619	1,077	66.5%
From Motor Vehicle	495	367	345	383	395	444	518	625	730	777	634	466	6,179	215	3.5%
Motor Vehicle Parts	374	322	419	366	388	425	514	464	488	471	375	345	4,951	88	1.8%
Bicycles	1	5	13	9	21	35	48	59	42	10	18	6	267	8	3.0%
From Building	207	195	258	230	233	293	246	259	236	250	259	205	2,871	444	15.5%
From Coin Operated	1	0	2	3	2	1	2	1	0	3	2	1	18	2	11.1%
Other	98	85	121	133	183	219	189	207	161	141	130	138	1,805	180	10.0%
Attempt**	129	66	62	87	57	58	86	107	130	176	93	102	1,153	50	4.3%
Total Motor Vehicle Theft	427	311	321	328	357	421	471	443	404	552	497	430	4,962	257	5.2%
Auto	377	280	282	295	321	361	391	380	347	463	458	396	4,351	225	5.2%
Truck/Bus	48	30	33	30	28	47	67	49	46	83	35	34	530	26	4.9%
Motorcycle/Other	2	1	6	3	8	13	13	14	11	6	4	0	81	6	7.4%
Total Arson	18	15	36	16	22	18	31	26	18	20	18	17	255	42	16.5%

INDEX CRIME

BY DISTRICT & PATROL DIVISION | JAN. 01 - DEC. 31, 2009

DISTRICTS

CRIME	1ST	2ND	3RD	4TH	5TH	6TH	7TH	8TH	9TH	OTHER	TOTAL
MURDER	9	2	13	13	25	27	29	17	8	0	143
Percent Total	6.3%	1.4%	9.1%	9.1%	17.5%	18.9%	20.3%	11.9%	5.6%	0.0%	100.0%
RAPE	38	17	30	31	12	41	33	21	18	9	250
Percent Total	15.2%	6.8%	12.0%	12.4%	4.8%	16.4%	13.2%	8.4%	7.2%	3.6%	100.0%
ROBBERY	323	106	464	274	211	438	363	250	288	4	2721
Percent Total	11.9%	3.9%	17.1%	10.1%	7.8%	16.1%	13.3%	9.2%	10.6%	0.1%	100.0%
AGGRAVATED ASSAULT	501	150	470	358	448	789	554	611	354	4	4239
Percent Total	11.8%	3.5%	11.1%	8.4%	10.6%	18.6%	13.1%	14.4%	8.4%	0.1%	100.0%
TOTAL CRIME AGAINST PERSONS	871	275	977	676	696	1295	979	899	668	17	7353
Percent Total	11.8%	3.7%	13.3%	9.2%	9.5%	17.6%	13.3%	12.2%	9.1%	0.2%	100.0%
BURGLARY	1171	651	1453	337	320	1044	755	627	475	1	6834
Percent Total	17.1%	9.5%	21.3%	4.9%	4.7%	15.3%	11.0%	9.2%	7.0%	0.0%	100.0%
LARCENY	2116	2245	2972	2728	870	1887	1603	794	2572	12	17799
Percent Total	11.9%	12.6%	16.7%	15.3%	4.9%	10.6%	9.0%	4.5%	14.5%	0.1%	100.0%
AUTO THEFT	677	411	873	494	291	735	551	374	554	2	4962
Percent Total	13.6%	8.3%	17.6%	10.0%	5.9%	14.8%	11.1%	7.5%	11.2%	0.0%	100.0%
ARSON	32	10	27	8	31	69	40	29	8	1	255
Percent Total	12.5%	3.9%	10.6%	3.1%	12.2%	27.1%	15.7%	11.4%	3.1%	0.4%	100.0%
TOTAL CRIME AGAINST PROPERTY	3996	3317	5325	3567	1512	3735	2949	1824	3609	16	29850
Percent Total	13.4%	11.1%	17.8%	11.9%	5.1%	12.5%	9.9%	6.1%	12.1%	0.1%	100.0%
TOTAL INDEX CRIME	4867	3592	6302	4243	2208	5030	3928	2723	4277	33	37203
Percent Total	13.1%	9.7%	16.9%	11.4%	5.9%	13.5%	10.6%	7.3%	11.5%	0.1%	100.0%

Source : CRM0005-B

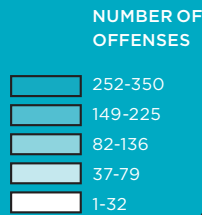
Note: Crimes under the "other" category were not coded to a specific district/patrol division

PATROL DIVISIONS (SOUTH, CENTRAL AND NORTH)

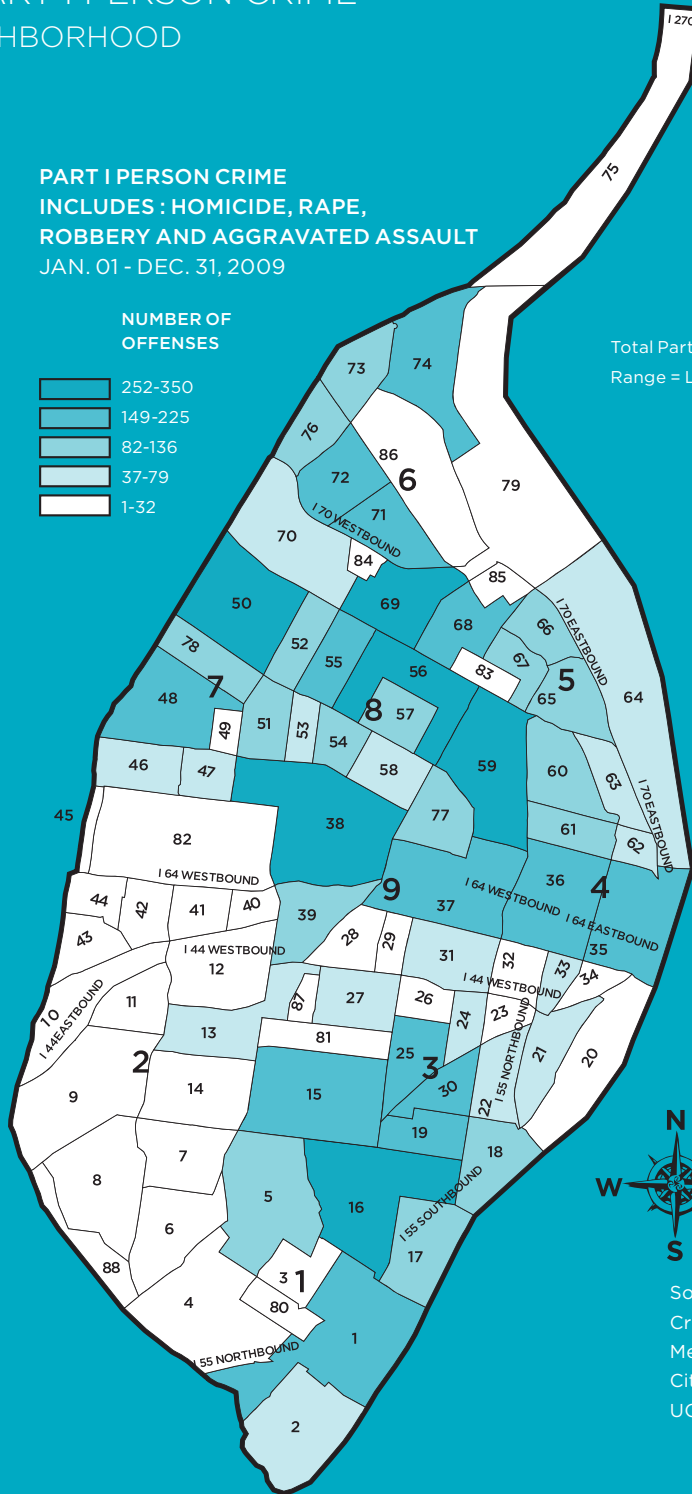
CRIME	SOUTH	CENTRAL	NORTH	CRIME	SOUTH	CENTRAL	NORTH
MURDER	24	46	73	BURGLARY	3275	1132	2426
Percent Total	16.8%	32.2%	51.0%	Percent Total	47.9%	16.6%	35.5%
RAPE	85	61	95	LARCENY	7333	6170	4284
Percent Total	34.0%	24.4%	38.0%	Percent Total	41.2%	34.7%	24.1%
ROBBERY	893	773	1051	AUTO THEFT	1961	1339	1660
Percent Total	32.8%	28.4%	38.6%	Percent Total	39.5%	27.0%	33.5%
AGGRAVATED ASSAULT	1121	1160	1954	ARSON	69	47	138
Percent Total	26.4%	27.4%	46.1%	Percent Total	27.1%	18.4%	54.1%

UCR PART I PERSON CRIME BY NEIGHBORHOOD

**PART I PERSON CRIME
INCLUDES : HOMICIDE, RAPE,
ROBBERY AND AGGRAVATED ASSAULT
JAN. 01 - DEC. 31, 2009**



Total Part I Person Crime 7,278
Range = Low of 1 to High of 350

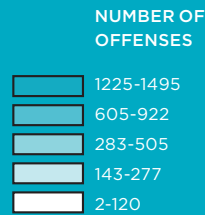


Source:
Crime Analysis Unit
Metropolitan Police Department
City of St. Louis
UCR - By Date of Occurrence

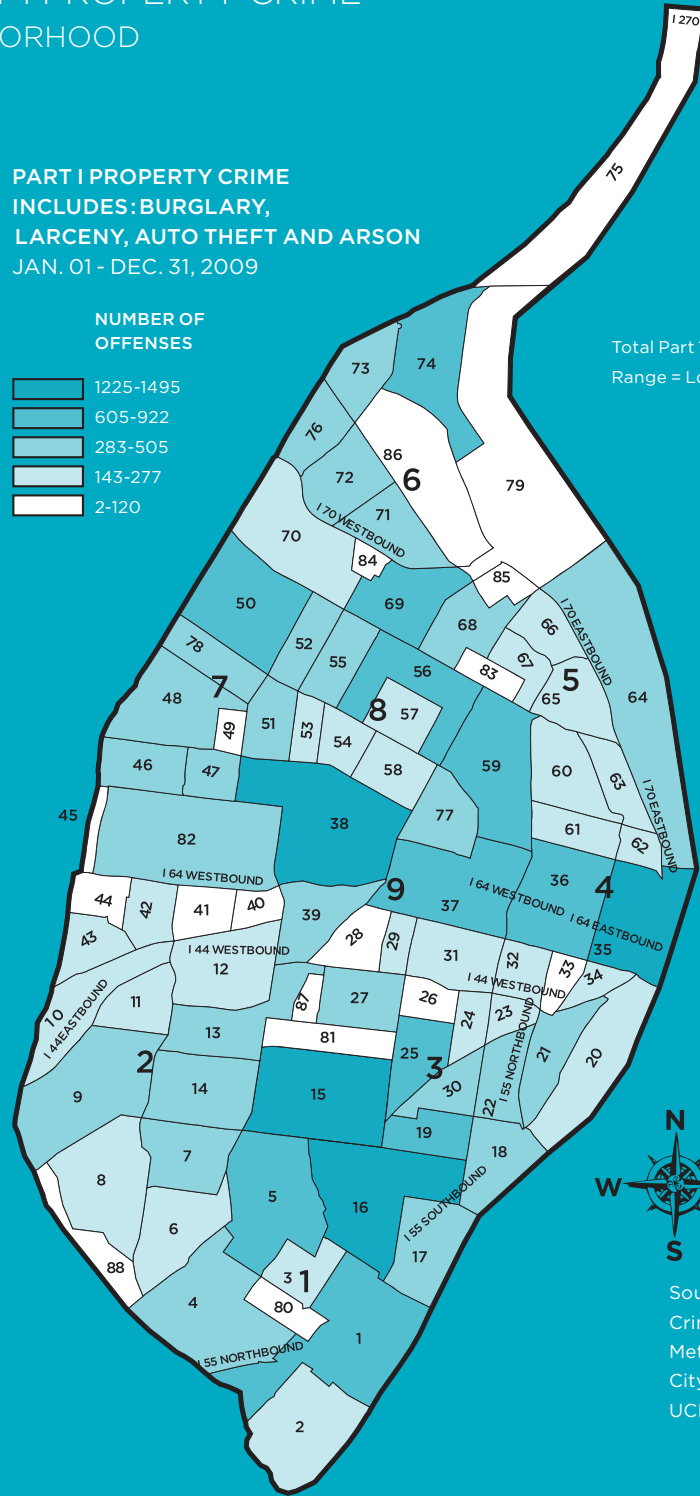
01 Carondelet	13 Southwest Garden	25 Tower Grove East	37 Midtown
02 Patch	14 North Hampton	26 Compton Heights	38 Central West End
03 Holly Hills	15 Tower Grove South	27 Shaw	39 Forest Park SE
04 Boulevard Heights	16 Dutchtown	28 McRee Town	40 Kings Oak
05 Bevo Mill	17 Mount Pleasant	29 Tiffany	41 Cheltenham
06 Princeton Heights	18 Marine Villa	30 Benton Park West	42 Clayton-Tamm
07 South Hampton	19 Gravois Park	31 The Gate District	43 Franz Park
08 St. Louis Hills	20 Kosciusko	32 Lafayette Square	44 Hi-Point
09 Lindenwood Park	21 Soulard	33 Peabody-Darst-Webbe	45 Wydown-Skinker
10 Ellendale	22 Benton Park	34 Lasalle	46 Skinker-DeBaliviere
11 Clifton Heights	23 McKinley Heights	35 Downtown	47 DeBaliviere Place
12 The Hill	24 Fox Park	36 Downtown West	48 West End

UCR PART I PROPERTY CRIME BY NEIGHBORHOOD

**PART I PROPERTY CRIME
INCLUDES: BURGLARY,
LARCENY, AUTO THEFT AND ARSON**
JAN. 01 - DEC. 31, 2009



Total Part 1 Person Crime 29,538
Range = Low of 2 to High of 1,495



Source:
Crime Analysis Unit
Metropolitan Police Department
City of St. Louis
UCR - By Date of Occurrence

49	Visitation Park	60	St. Louis Place	71	Mark Twain	81	Tower Grove Park
50	Wells-Goodfellow	61	Carr Square	72	Walnut Park East	82	Forest Park
51	Academy	62	Columbus Square	73	North Point	83	Fairgrounds Park
52	Kingsway West	63	Old North St. Louis	74	Baden	84	Penrose Park
53	Fountain Park	64	Near N. Riverfront	75	Riverview	85	O'Fallon Park
54	Lewis Place	65	Hyde Park	76	Walnut Park West	86	Calvary-Bellefontaine Cemetaries
55	Kingsway East	66	College Hill	77	Covenant Blu— Grand Center	87	Botanical Gardens
56	The Greater Ville	67	Fairground Neighborhood	78	Hamilton Heights	88	Wilmore Park
57	The Ville	68	O'Fallon	79	North Riverfront		
58	Vandeventer	69	Penrose	80	Carondelet Park		
59	Jeff Vanderlou	70	Mark Twain I-70 Ind.				

PERSONS ARRESTED FOR PART I AND PART II OFFENSES BY AGE AND SEX | JAN. 01 - DEC. 31, 2009

CLASSIFICATION OF OFFENSES	TOTAL			UNDER 10			10-14			15-18		
	M	F	Tot.	M	F	Tot.	M	F	Tot.	M	F	Tot.
Grand Total - All Classes	20783	5714	26497	14	3	17	341	127	468	2737	711	3448
Percentage - All Classes	78.4%	21.6%	100.0%	82.4%	17.6%	100.0%	72.9%	27.1%	100.0%	79.4%	20.6%	100.0%
Part I Crime	5463	1306	6769	5	0	5	117	28	145	898	245	1143
Percent Part I	80.7%	19.3%	100.0%	100.0%	0.0%	100.0%	80.7%	19.3%	100.0%	78.6%	21.4%	100.0%
	M	F	Tot.	M	F	Tot.	M	F	Tot.	M	F	Tot.
Criminal Homicide												
a. Murder	131	7	138	0	0	0	0	0	0	25	0	25
b. Manslaughter by Negligence	3	0	3	0	0	0	0	0	0	2	0	2
Forcible Rape	102	0	102	0	0	0	0	0	0	12	0	12
Robbery	684	60	744	0	0	0	20	1	21	158	11	169
Aggravated Assault	1355	297	1652	0	0	0	8	3	11	164	41	205
Burglary	938	73	1011	2	0	2	32	2	34	189	10	199
Larceny-Theft	2047	823	2870	3	0	3	40	18	58	288	177	465
Auto Theft	187	35	222	0	0	0	15	3	18	60	4	64
Arson	16	11	27	0	0	0	2	1	3	0	2	2
Part II Crime	15320	4408	19728	9	3	12	224	99	323	1839	466	2305
Percent Part II	77.7%	22.3%	100.0%	75.0%	25.0%	100.0%	69.3%	30.7%	100.0%	79.8%	20.2%	100.0%
	M	F	Tot.	M	F	Tot.	M	F	Tot.	M	F	Tot.
Other Assaults	2792	722	3514	1	3	4	84	67	151	425	190	615
Forgery & Counterfeiting	186	104	290	0	0	0	0	0	0	8	7	15
Fraud	187	97	284	0	0	0	0	0	0	12	8	20
Stolen Property - Buying												
Receiving, Possessing	737	81	818	0	0	0	26	3	29	278	15	293
Vandalism	735	312	1047	4	0	4	31	6	37	113	22	135
Weapons Offenses	667	51	718	0	0	0	5	1	6	131	6	137
Prostitution	12	51	63	0	0	0	0	0	0	0	0	0
Sex Offenses*	229	11	240	4	0	4	16	1	17	16	1	17
Drug Violations	2527	380	2907	0	0	0	17	2	19	289	26	315
Gambling	15	3	18	0	0	0	0	0	0	1	0	1
Offenses Against Family & Children	155	57	212	0	0	0	0	0	0	6	0	6
DUI	310	65	375	0	0	0	0	0	0	0	0	0
Liquor Law Violations	427	96	523	0	0	0	0	0	0	15	10	25
Disorderly Conduct	2302	1166	3468	0	0	0	16	15	31	203	123	326
Vagrancy	49	10	59	0	0	0	0	0	0	0	0	0
All Others	3990	1202	5192	0	0	0	29	4	33	342	58	400

19-29			30-39			40-49			50-59			60 & Over		
M	F	Tot.	M	F	Tot.	M	F	Tot.	M	F	Tot.	M	F	Tot.
8265	2248	10513	4130	1276	5406	3345	902	4247	1602	355	1957	349	92	441
78.6%	21.4%	100.0%	76.4%	23.6%	100.0%	78.8%	21.2%	100.0%	81.9%	18.1%	100.0%	79.1%	20.9%	100.0%

2056	501	2557	1064	264	1328	868	185	1053	402	71	473	53	12	65
80.4%	19.6%	100.0%	80.1%	19.9%	100.0%	82.4%	17.6%	100.0%	85.0%	15.0%	100.0%	81.5%	18.5%	100.0%

M	F	Tot.	M	F	Tot.	M	F	Tot.	M	F	Tot.	M	F	Tot.
72	4	76	20	1	21	11	2	13	1	0	1	2	0	2
1	0	1	0	0	0	0	0	0	0	0	0	0	0	0
40	0	40	19	0	19	24	0	24	7	0	7	0	0	0
343	24	367	104	17	121	40	5	45	18	2	20	1	0	1
568	140	708	296	56	352	196	41	237	108	16	124	15	0	15
365	34	399	181	14	195	131	9	140	35	4	39	3	0	3
600	283	883	417	165	582	442	121	563	226	48	274	31	11	42
64	13	77	24	9	33	19	5	24	5	0	5	0	1	1
3	3	6	3	2	5	5	2	7	2	1	3	1	0	1
6209	1747	7956	3066	1012	4078	2477	717	3194	1200	284	1484	296	80	376
78.0%	22.0%	100.0%	75.2%	24.8%	100.0%	77.6%	22.4%	100.0%	80.9%	19.1%	100.0%	78.7%	21.3%	100.0%

M	F	Tot.	M	F	Tot.	M	F	Tot.	M	F	Tot.	M	F	Tot.
1148	266	1414	585	114	699	385	64	449	136	18	154	28	0	28
79	58	137	38	20	58	42	13	55	16	6	22	3	0	3
86	58	144	38	21	59	35	9	44	15	1	16	1	0	1
258	43	301	98	10	108	52	9	61	19	1	20	6	0	6
306	166	472	144	66	210	95	42	137	38	7	45	4	3	7
336	28	364	92	3	95	62	4	66	33	9	42	8	0	8
3	21	24	0	13	13	6	13	19	2	3	5	1	1	2
65	3	68	53	4	57	35	2	37	31	0	31	9	0	9
1188	162	1350	594	111	705	306	64	370	122	14	136	11	1	12
10	2	12	3	1	4	1	0	1	0	0	0	0	0	0
45	27	72	54	13	67	35	15	50	11	2	13	4	0	4
77	23	100	72	21	93	89	13	102	56	8	64	16	0	16
118	45	163	61	14	75	137	22	159	88	5	93	8	0	8
879	461	1340	470	279	749	434	202	636	249	72	321	51	14	65
9	2	11	6	2	8	24	1	25	9	5	14	1	0	1
1602	382	1984	758	320	1078	739	244	983	375	133	508	145	61	206

Source : MSHP UCR Query Arrest by Age, Sex, Crime, (CJ550201)
 Includes Summons Data
 * Excluding forcible rape and prostitution

PERSONS ARRESTED FOR PART I AND PART II OFFENSES BY RACE | JAN. 01 - DEC. 31, 2009

CLASSIFICATION OF OFFENSES	WHITE		BLACK		OTHER		TOTAL	
	ARRESTS	PERCENT	ARRESTS	PERCENT	ARRESTS	PERCENT	ARRESTS	PERCENT
Grand Total - All Classes	5310	20.0%	21080	79.6%	107	0.4%	26497	100.0%
Part I Crime	1177	17.4%	5574	82.3%	18	0.3%	6769	100.0%
Criminal Homicide								
a. Murder	4	2.9%	134	97.1%	0	0.0%	138	100.0%
b. Manslaughter by Negligence	0	0.0%	3	100.0%	0	0.0%	3	100.0%
Forcible Rape	11	10.8%	90	88.2%	1	1.0%	102	100.0%
Robbery	52	7.0%	690	92.7%	2	0.3%	744	100.0%
Aggravated Assault	209	12.7%	1442	87.3%	1	0.1%	1652	100.0%
Burglary	204	20.2%	804	79.5%	3	0.3%	1011	100.0%
Larceny-Theft	658	22.9%	2201	76.7%	11	0.4%	2870	100.0%
Auto Theft	29	13.1%	193	86.9%	0	0.0%	222	100.0%
Arson	10	37.0%	17	63.0%	0	0.0%	27	100.0%
Part II Crime	4133	20.9%	15506	78.6%	89	0.5%	19728	100.0%
Other Assaults	577	16.4%	2927	83.3%	10	0.3%	3514	100.0%
Forgery & Counterfeiting	39	13.4%	251	86.6%	0	0.0%	290	100.0%
Fraud	85	29.9%	190	66.9%	9	3.2%	284	100.0%
Stolen Property - Buying, Receiving, Possessing	60	7.3%	758	92.7%	0	0.0%	818	100.0%
Vandalism	184	17.6%	859	82.0%	4	0.4%	1047	100.0%
Weapons Offenses	75	10.4%	640	89.1%	3	0.4%	718	100.0%
Prostitution	34	54.0%	28	44.4%	1	1.6%	63	100.0%
Sex Offenses*	41	17.1%	197	82.1%	2	0.8%	240	100.0%
Drug Violations	599	20.6%	2303	79.2%	5	0.2%	2907	100.0%
Gambling	6	33.3%	10	55.6%	2	11.1%	18	100.0%
Offenses Against Family & Children	45	21.2%	167	78.8%	0	0.0%	212	100.0%
DUI	197	52.5%	177	47.2%	1	0.3%	375	100.0%
Liquor Law Violations	225	43.0%	297	56.8%	1	0.2%	523	100.0%
Disorderly Conduct	923	26.6%	2534	73.1%	11	0.3%	3468	100.0%
Vagrancy	23	39.0%	36	61.0%	0	0.0%	59	100.0%
All Others	1020	19.6%	4132	79.6%	40	0.8%	5192	100.0%

Source : MSHP UCR Query Arrest by Age, Sex, & Crime (CJ550201)
Includes Summons Data

* Excluding forcible rape and prostitution

JUVENILES ARRESTED

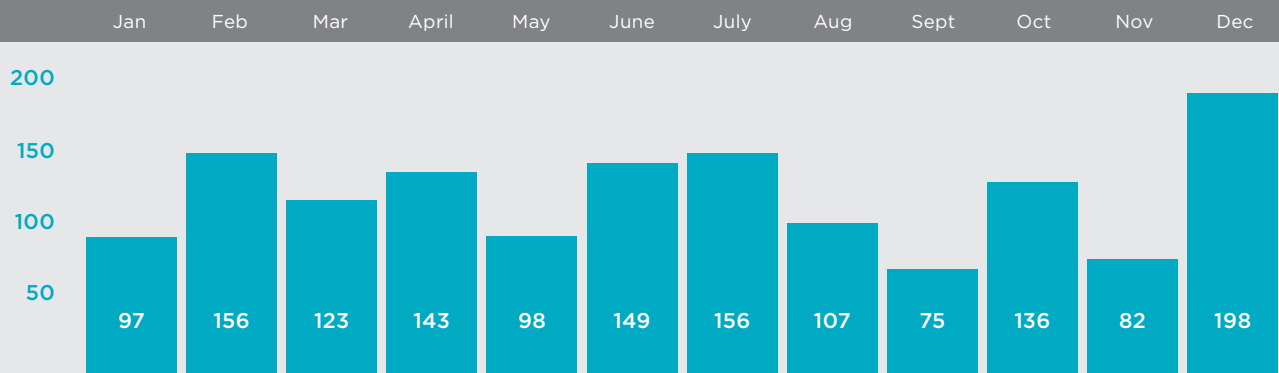
BY DISTRICT & MONTH | JAN. 01 - DEC. 31, 2009

DISTRICTS

		JAN	FEB	MAR	APR	MAY	JUN	JUL	AUG	SEP	OCT	NOV	DEC	TOTAL	PERCENT
1ST	MALE	12	11	10	15	0	14	18	28	0	36	1	24	169	73.8%
	FEMALE	0	7	1	4	0	7	0	5	0	30	0	6	60	26.2%
	TOTAL	12	18	11	19	0	21	18	33	0	66	1	30	229	100.0%
2ND	MALE	18	6	7	8	0	10	7	16	1	1	0	24	98	71.0%
	FEMALE	6	2	1	1	0	10	3	7	0	0	1	9	40	29.0%
	TOTAL	24	8	8	9	0	20	10	23	1	1	1	33	138	100.0%
3RD	MALE	20	10	9	19	0	21	6	25	1	15	2	31	159	79.5%
	FEMALE	2	4	2	5	0	4	3	8	0	2	0	11	41	20.5%
	TOTAL	22	14	11	24	0	25	9	33	1	17	2	42	200	100.0%
4TH	MALE	1	26	13	20	15	15	16	6	13	6	6	19	156	74.3%
	FEMALE	0	3	4	7	9	7	4	6	4	0	2	8	54	25.7%
	TOTAL	1	29	17	27	24	22	20	12	17	6	8	27	210	100.0%
5TH	MALE	0	6	10	5	17	7	13	7	6	2	8	5	86	74.1%
	FEMALE	0	3	4	6	2	2	2	0	5	1	4	1	30	25.9%
	TOTAL	0	9	14	3	19	9	15	7	11	3	12	6	116	100.0%
6TH	MALE	16	15	15	10	5	14	7	6	5	7	9	10	119	76.3%
	FEMALE	2	13	3	2	3	5	2	1	0	3	0	3	37	23.7%
	TOTAL	18	28	18	1	8	19	9	7	5	10	9	13	156	100.0%
7TH	MALE	7	6	12	8	12	13	5	2	4	5	10	11	95	84.1%
	FEMALE	0	2	3	1	2	0	1	1	2	2	2	2	18	15.9%
	TOTAL	7	8	15	9	14	13	6	3	6	7	12	13	113	100.0%
8TH	MALE	10	7	14	8	3	9	8	5	7	13	12	9	105	77.8%
	FEMALE	0	4	3	2	1	1	3	1	8	1	4	2	30	22.2%
	TOTAL	10	11	17	10	4	10	11	6	15	14	16	11	135	100.0%
9TH	MALE	2	17	7	16	18	6	9	5	15	9	16	20	140	70.4%
	FEMALE	1	14	5	6	11	4	0	3	4	3	5	3	59	29.6%
	TOTAL	3	31	12	22	29	10	9	8	19	12	21	23	199	100.0%
TOTAL	MALE	86	104	97	109	70	109	89	100	52	94	64	153	1127	75.3%
	FEMALE	11	52	26	34	28	40	18	32	23	42	18	45	369	24.7%
	TOTAL	97	156	123	143	98	149	107	132	75	136	82	198	1496	100.0%

Note : All Juvenile Apprehensions are included (both those booked and released and those booked by the Juvenile Court)

TOTAL JUVENILES ARRESTED BY MONTH



Note : Juveniles are those under the age of 17

HOMICIDE DATA | JAN. 01 - DEC. 31, 2009

TOTAL # OF VICTIMS	WHITE		BLACK		ASIAN/ PACIFIC ISLANDER		AMERICAN INDIAN/ ALASKAN NATIVE		RACE UNKNOWN	
	MALE	FEMALE	MALE	FEMALE	MALE	FEMALE	MALE	FEMALE	MALE	FEMALE
INFANT	1	0	0	0	1	0	0	0	0	0
1-4	4	0	0	2	2	0	0	0	0	0
5-9	0	0	0	0	0	0	0	0	0	0
10-14	3	0	0	3	0	0	0	0	0	0
15-19	28	0	0	26	2	0	0	0	0	0
20-24	19	1	0	18	0	0	0	0	0	0
25-29	27	1	0	25	1	0	0	0	0	0
30-34	18	2	3	12	1	0	0	0	0	0
35-39	14	4	0	9	1	0	0	0	0	0
40-44	14	2	0	12	0	0	0	0	0	0
45-49	6	1	1	3	1	0	0	0	0	0
50-54	5	1	0	4	0	0	0	0	0	0
55-59	2	1	0	1	0	0	0	0	0	0
60-64	2	0	0	1	1	0	0	0	0	0
65-69	0	0	0	0	0	0	0	0	0	0
70-74	0	0	0	0	0	0	0	0	0	0
75/OVER	0	0	0	0	0	0	0	0	0	0
UNKNOWN	0	0	0	0	0	0	0	0	0	0
TOTAL	143	13	4	116	9	1	0	0	0	0

Source: Missouri Uniform Crime Reporting Program Supplemental Homicide – Victim by age, sex, and race (CJ550302)



CRIME SNAPSHOT

- ONE** MURDER EVERY 61 HOURS
- ONE** FORCIBLE RAPE EVERY 35 HOURS
- ONE** ROBBERY EVERY 3.2 HOURS
- ONE** AGGRAVATED ASSAULT EVERY 2.1 HOURS
- ONE** BURGLARY EVERY 77 MINUTES
- ONE** MOTOR VEHICLE THEFT EVERY 106 MINUTES

JANUARY 1, 2009 - DECEMBER 31, 2009

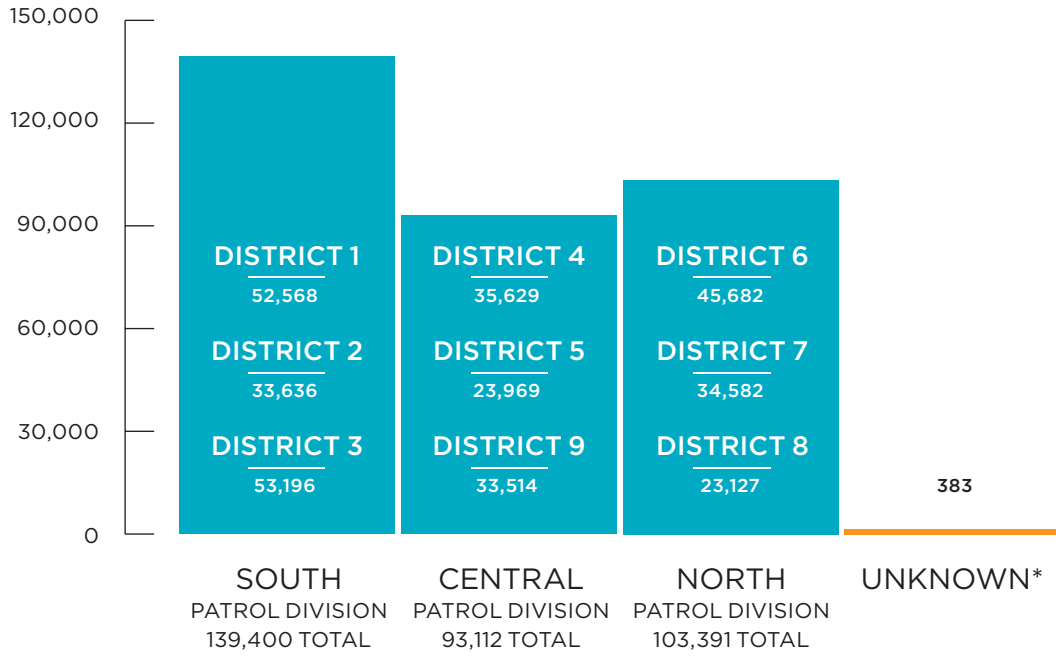
CRIME DESCRIPTION	CRIME	UNFOUNDED	ADJUSTMENTS	NET TOTAL
HOMICIDE	143	-8	8	143
RAPE	252	-8	6	250
ROBBERY	2,740	-20	1	2,721
AGGRAVATED ASSAULT	4,260	-17	-4	4,239
BURGLARY	6,899	-51	-14	6,834
LARCENY	17,886	-90	3	17,799
VEHICLE THEFT	5,165	-214	11	4,962
ARSON	283	-15	-13	255
GRAND TOTAL	37,628	-423	-2	37,203

Source: Data retrieved from Crime Coding Data Retrieval System

CALLS FOR SERVICE

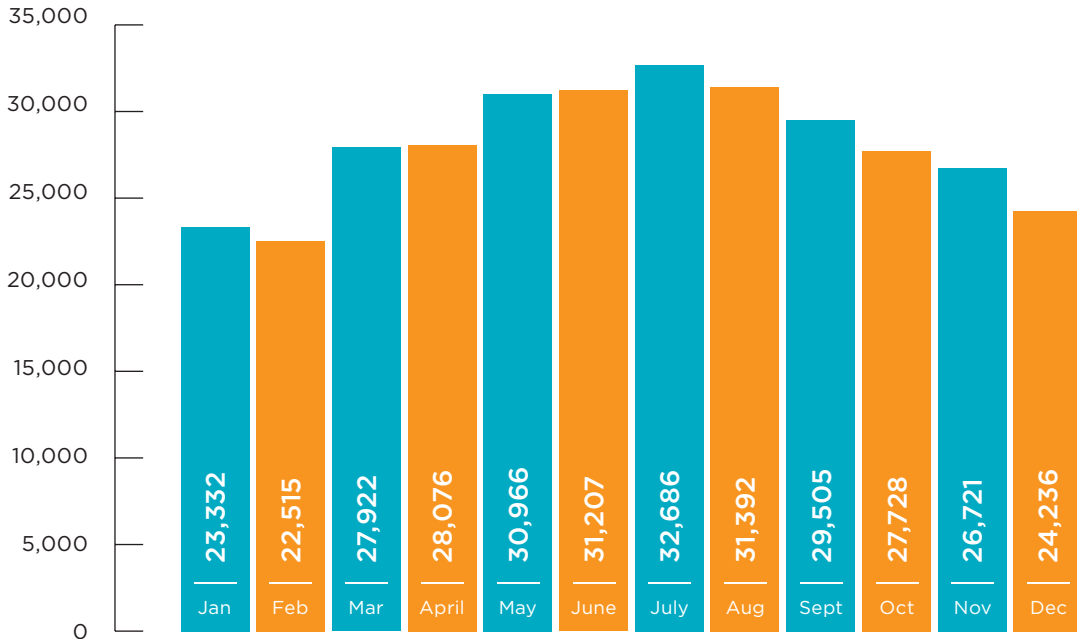
DIRECTED INCIDENTS BY DIVISION | JAN. 01 - DEC. 31, 2009

DIRECTED INCIDENTS BY DIVISION



* Calls associated with unverified addresses
Source: SLMPD Call for Service Retrieval

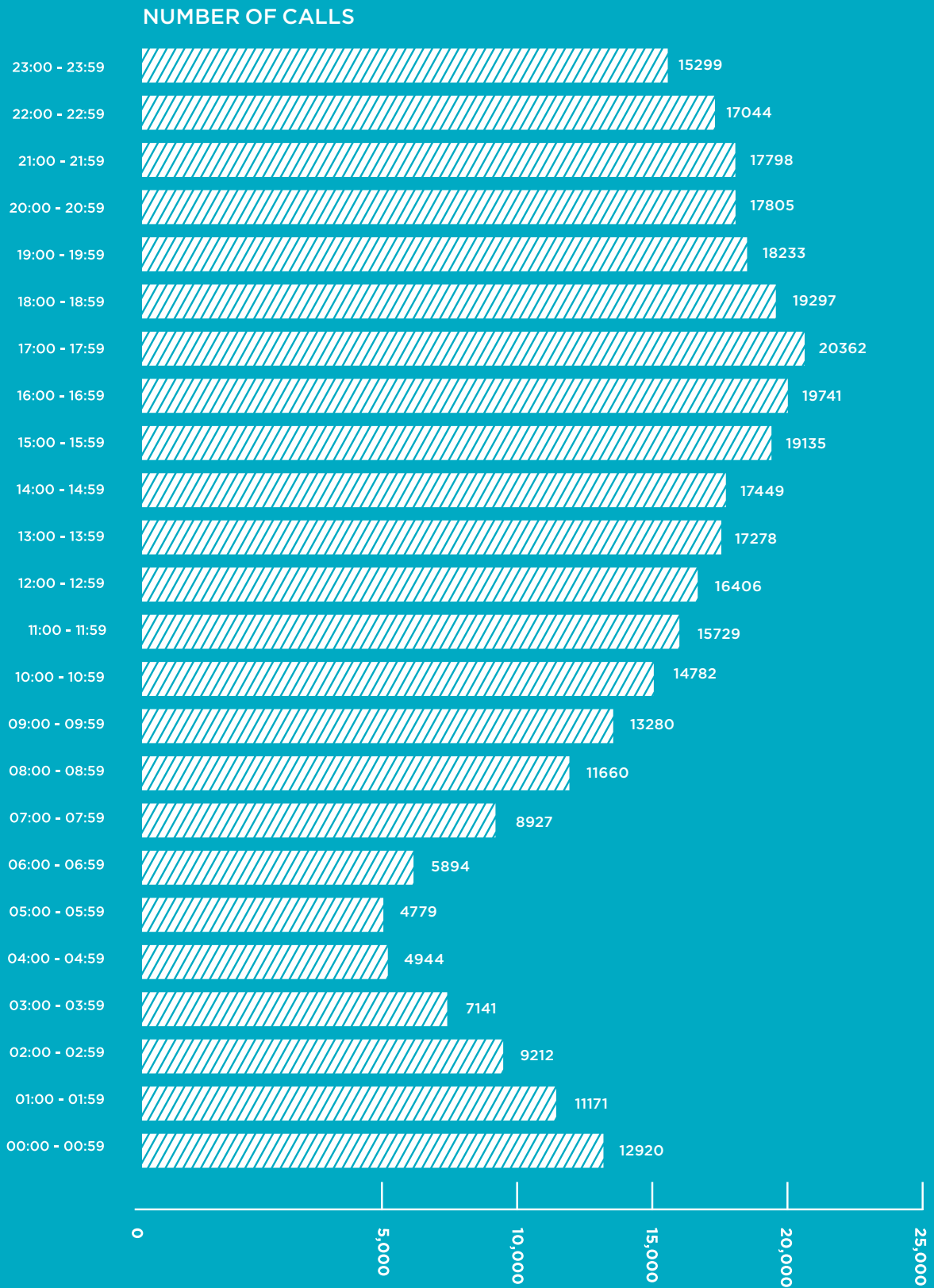
DIRECTED INCIDENTS BY MONTH



DIRECTED INCIDENTS TOTAL: 336,286

Source: SLMPD Call for Service Retrieval

CALLS FOR SERVICE DIRECTED INCIDENTS BY HOUR | JAN. 01 - DEC. 31, 2009



Source: SLMPD Call for Service Retrieval

911 CENTER STATISTICS | JAN. 01 - DEC. 31, 2009

BY MONTH

MONTH	INCOMING CALLS		AVERAGE DELAY TO ANSWER (sec) ^A			
	CALLS RECEIVED	AVG. DELAY	DIRECTED INCIDENTS	TRU CALLS FOR SERVICE	TRAFFIC-RELATED ACTIVITIES	SELF-INITIATED INCIDENTS
JANUARY	58,767	3.5	22,243	1,536	2,513	22,995
FEBRUARY	56,508	4.2	21,564	1,315	2,656	31,256
MARCH	68,707	5	26,748	1,439	2,845	25,524
APRIL	65,574	4.7	26,864	1,371	1,858	29,661
MAY	71,849	5.3	29,719	1,509	2,318	20,578
JUNE	72,292	5.3	29,775	1,536	1,481	18,764
JULY	73,059	5	31,231	1,751	1,878	17,373
AUGUST	61,907	4.5	29,984	1,793	1,997	19,199
SEPTEMBER	67,359	4.6	28,150	1,852	2,112	18,595
OCTOBER	64,970	5.2	26,311	1,911	1,882	16,669
NOVEMBER	62,923	5.3	25,155	1,629	1,796	19,028
DECEMBER	60,724	4.6	22,851	1,572	1,820	29,341
TOTAL	784,639	4.8	320,595	19,187	25,156	251,883

- 1. Incoming Calls** - Total calls received by the 911 Center, which is the primary service answering point for everyone within the city limits including Police, Fire and EMS
- 2. Avg. Delay** - Average time in seconds a 911 call was answered
- 3. Directed Incidents*** - Dispatched calls with a priority of 1,2,3 or 4, based on Final Call Code
- 4. TRU Calls*** - Calls for Service received by the Telephone Reporting Unit (TRU)
- 5. Traffic-Related Activities**** - Calls based on radio codes
- 6. Self-Initiated Incidents*** - Calls based on radio incident codes

* Does not include cancelled or duplicate calls

Includes activities related to Traffic Violations, Traffic Control, and Traffic Congestion

^A Based upon averages from daily half-hour intervals

Sources:

SLMPD Calls For Service Retrieval (Calls for Service Retrieval Actions)

Planning and Research Division (Communications Center Actions)

METROPOLITAN POLICE DEPARTMENT, CITY OF ST. LOUIS

COMMISSIONED OFFICERS BY THE NUMBERS 2009

LENGTH OF SERVICE BY RANK*

YEARS	CHIEF	LIEUTENANT COLONEL	MAJOR	CAPTAIN	LIEUTENANT	SERGEANT	POLICE OFFICER	PROB. POLICE OFFICER	GRAND TOTAL	PERCENT
0-4							284	119	403	29.50%
5-9						5	183	1**	189	13.84%
10-14					3	50	159		212	15.52%
15-19				3	16	80	146	1#	246	18.01%
20-24	1			3	23	44	119		190	13.91%
25-30		1	1	2	6	18	29		57	4.17%
30+		5		9	12	22	21		69	5.05%
TOTAL	1	6	1	17	60	219	941	121	1366	100%

*as of 12/28/2009

**Served as a civilian employee before being commissioned as a police officer

#Served a one-year demotion

ANNUAL SALARY RANGE BY RANK

Chief*	\$103,867 - \$112,941
Lieutenant Colonel	\$83,570 - \$91,953
Major	\$81,265 - \$87,236
Captain	\$74,078 - \$80,414
Lieutenant	\$62,968 - \$74,480
Sergeant	\$54,030 - \$68,488
Police Officer	\$38,826 - \$59,887
Prob. Police Officer	\$37,514

*Salary set by contract

RANK BY THE NUMBERS

Chief	1
Lieutenant Colonel	6
Major	1
Captain	17
Lieutenant	60
Sergeant	219
Police Officer	941
Prob. Police Officer	121
TOTAL	1366

LAW ENFORCEMENT OFFICERS BY RACE AND GENDER

	WHITE	BLACK	OTHER	TOTAL
MALE	55.2%	27%	2.2%	84.5%
FEMALE	9.2%	6.2%	0.1%	15.5%
TOTAL	64.5%	33.2%	2.4%	100%

THE AVERAGE AGE OF A METROPOLITAN POLICE DEPARTMENT OFFICER IS 38.9

Sources: SLMPD PeopleSoft System, SLMPD Salary Matrix 9/2008

Note: Probationary Police Officers are those with less than one year of service

LAW ENFORCEMENT OFFICERS ASSAULTED | JAN. 01 - DEC. 31, 2009

BY TYPE OF WEAPON

	TOTAL	FIREARM	KNIFE	OTHER	HANDS
Responding to "Disturbance Call"	80	01	01	08	70
Burglary in Progress or Pursuit	05	00	01	00	04
Robbery in Progress or Pursuit	12	04	01	02	05
Attempting other Arrests	98	11	03	10	74
Civil Disorder (Riot, etc.)	01	00	00	00	01
Handling/Transporting Prisoners	21	00	00	01	20
Investigating Suspicious Persons	74	08	01	13	52
Ambush-No Warning	04	02	00	00	02
Mentally Deranged Person	01	00	00	00	01
Traffic Pursuit & Stops	48	08	00	19	21
All Other	68	09	02	16	41
TOTAL	412	43	09	69	291

TOTAL ASSAULTED
412

Number with Personal Injury	61	01	00	17	43
Number without Personal Injury	351	42	09	52	248

BY TYPE OF ASSIGNMENT

	TWO MAN	ONE MAN ALONE	ONE MAN ASSIST	DETECTIVE ALONE	DETECTIVE ASSIST	OTHER ALONE	OTHER ASSIST	POLICE ASSAULTS CLEARED
Responding to "Disturbance Call"	47	22	02	00	00	02	07	68
Burglary in Progress or Pursuit	04	01	00	00	00	00	00	03
Robbery in Progress or Pursuit	10	01	00	00	00	00	01	07
Attempting other Arrests	67	14	03	00	00	05	09	67
Civil Disorder (Riot, etc.)	01	00	00	00	00	00	00	01
Handling/Transporting Prisoners	11	07	00	00	00	00	03	19
Investigating Suspicious Persons	53	11	00	00	02	04	04	55
Ambush-No Warning	00	01	00	00	02	00	01	03
Mentally Deranged Person	01	00	00	00	00	00	00	00
Traffic Pursuit & Stops	43	02	00	00	00	00	03	36
All Other	31	20	00	00	00	05	12	49
TOTAL	268	79	05	00	04	16	40	307

TIME OF ASSAULTS	12:00-02:00	02:01-04:00	04:01-06:00	06:01-08:00	08:01-10:00	10:01-12:00
		52	31	3	6	9
	12:01-14:00	14:01-16:00	16:01-18:00	18:01-20:00	20:01-22:00	22:01-24:00
		52	25	41	52	56

Source: MSHP Report CJ550702

INTERNAL AFFAIRS DATA*

OVERALL STATISTICS - CLOSED CASES | JAN. 01 - DEC. 31, 2009

CHARGE DESCRIPTION	EXONERATED	NOT SUSTAINED	SUSTAINED	UNFOUNDED	WITHDRAWN	TOTAL CHARGES
Abuse of a Subordinate	2	1	0	0	0	3
Conduct Unbecoming	2	58	18	16	6	100
D.A.R.B. (Driving)	0	0	117	0	0	117
Failed to Acknowledge or Respond to Radio Call	0	0	1	0	0	1
Failed to Attend Court	0	0	3	0	0	3
Failed to Conduct a Proper Investigation	4	21	15	1	8	49
Failed to Notify Supervisor/Commander of Police	0	1	9	0	0	10
Failed to Schedule/Take PAT	0	0	3	1	0	4
Failing to Make Required Reports	0	3	3	0	0	6
Failing to Properly Exercise Duties	0	3	15	3	1	22
Failure of Drug Test	0	0	2	0	0	2
Failure to Follow Evidence/Property Procedures	0	0	1	1	0	2
Failure to Follow Lawful Order of Superior	0	0	0	1	0	1
Failure to Promptly Report any Misconduct	0	4	0	0	0	4
Failure to Report to Duty on Time	0	0	3	0	0	3
False Reporting	0	3	9	2	0	14
Illegal Search	1	0	1	0	0	2
Knowingly Associating w/Criminals	0	1	0	0	0	1
Lack of Police Attention	0	1	0	2	0	3
Lost/Stolen/Careless Handling Dept. Prop.	0	0	17	0	0	17
Misuse of Dept. Computer System	0	0	5	0	0	5
Money and/or Property Missing	0	0	0	2	0	2
Neglect of Duty/Asleep on Duty	4	6	6	1	0	17
Physical Abuse/Use of Force	0	11	0	2	0	13
Radio Procedure Violation	0	0	8	0	0	8
Seatbelt Violation	1	0	33	0	0	34
Unjust Arrest, Summons, Etc.	0	3	0	0	0	3
Verbal Abuse	0	3	0	4	2	9
Violation of Appearance Standards	0	1	3	0	0	4
Violation of City Ordinance/State Laws (Watchman)	0	0	3	0	0	3
Violation of Dept. Procedures	1	2	35	4	0	42
Violation of Dept. Sick Reporting Policy	0	0	22	0	0	22
Violation of Pursuit Policy	0	0	4	0	0	4
Violation of Use of Force Policy	4	19	0	0	2	25
TOTAL	19	141	336	40	19	555

DISCIPLINARY ACTIONS:

Cautioned:	0
Reinstructed:	1
Oral Reprimand:	1
Written Reprimand:	152
Pay/Replacement:	0
Time/Days Taken:	0

DISCIPLINARY ACTIONS:

Suspended:	140
Demotion:	0
Dropped:	5
Resigned/Charges:	22
License Revoked:	12**

EXPLANATION OF COMPLAINT DISPOSITIONS

Sustained : Investigation disclosed sufficient evidence to support the allegation of the complaint.
Not Sustained : Insufficient evidence available to either prove or disprove the allegation.
Unfounded : The complaint was not based on facts, as shown by the investigation, or the incident complained of did not occur.
Exonerated : The actions complained of did occur, but the investigation disclosed that the actions were reasonable.
Withdrawn : Complainant withdrew complaint and the investigation was terminated.

*Includes complaints brought against Private Security Officers. The Board of Police Commissioners is responsible for licensing of Private Security Officers, who are not department employees

** Private Security Officers whose licenses have been revoked by the Board of Police Commissioners

FINANCIAL STATEMENT

FISCAL YEAR

2009*

* Fiscal Year 2009 = July 1, 2008 - June 30, 2009



BUDGET INFORMATION FY 2009 | JULY 1, 2008 - JUNE 30, 2009
 METROPOLITAN POLICE DEPARTMENT, CITY OF ST. LOUIS

EXPENDITURE CATEGORY

	ACTUAL FY07	BUDGET FY08	BUDGET FY09
Personal Services	\$114,909,650	\$112,555,430	\$112,504,470
Materials and Supplies	\$5,488,765	\$5,966,730	\$6,389,887
Equipment, Lease, and Assets	\$3,819,310	\$1,904,528	\$969,196
Contractual and Other Services	\$7,938,152	\$8,914,596	\$9,865,637
Debt Service and Special Charges	0	0	0
General Fund	\$132,155,877	\$129,341,284	\$129,729,190
Police Communications Support Fund	0	0	241,356
Public Safety Tax - Salaries	0	0	\$1,260,000
Public Safety Tax - New Officers	0	0	\$1,290,000
Riverfront Gaming Fund	\$1,350,000	\$1,350,000	\$2,350,000
Local Use Tax	\$3,755,500	\$5,025,999	\$11,073,000
Public Safety Trust Fund	0	\$4,499,142	\$2,398,151
Grant and Other Funds	\$7,177,218	\$4,572,214	\$5,377,263
ALL FUNDS	\$144,438,595	\$144,788,639	\$153,718,960

FULL TIME POSITIONS

Commissioned	1334.2	1348.0	1400.8
Commissioned - Other Funds	57.8	56.0	57.3
Civilian	527.0	534.0	534.0
ALL FUNDS	1919.0	1938.0	1992.0

BUDGET INFORMATION FY 2009 | JULY 1, 2008 - JUNE 30, 2009

BOARD OF POLICE COMMISSIONERS

MISSION AND SERVICES

The Metropolitan Police Department, City of St. Louis is governed by a five-member Board of Police Commissioners, four of whom are appointed by the Governor of the State of Missouri. The fifth member is the Mayor of the City of St. Louis. The City of St. Louis appropriates the funds necessary to operate the department.

The Board of Police Commissioners is responsible for establishing the rules, regulations, discipline and promotions of the Police Department's commissioned and civilian employees. The Board is also responsible for licensing and regulating watchmen in the City.

EXPENDITURE CATEGORY

	ACTUAL FY07	BUDGET FY08	BUDGET FY09
Personal Services	\$9,502,707	\$8,903,862	\$11,638,009
Materials and Supplies	\$1,215	0	\$1,000
Equipment, Lease, and Assets	0	\$350,000	0
Contractual and Other Services	\$393,046	\$281,476	\$345,804
Debt Service and Special Charges	0	0	0
	<hr/>	<hr/>	<hr/>
General Fund	\$9,896,968	\$9,535,338	\$11,984,813
Grant and Other Funds	0	0	0
ALL FUNDS	\$9,896,968	\$9,535,338	\$11,984,813

FULL TIME POSITIONS

Commissioned	1.0	1.0	1.0
Civilian	16.0	17.0	19.0
	<hr/>	<hr/>	<hr/>
ALL FUNDS	17.0	18.0	20.0

BUDGET INFORMATION FY 2009 | JULY 1, 2008 - JUNE 30, 2009

OFFICE OF THE CHIEF OF POLICE

MISSION AND SERVICES

The Chief of Police is responsible for the efficient and effective operation of the department and implementation of all policies established by the Board of Police Commissioners. Also included in the budget for the Office of the Chief of Police are fund allocations for Planning & Research, Information Technology, Intelligence, Public Information and Operational Planning.

EXPENDITURE CATEGORY

	ACTUAL FY07	BUDGET FY08	BUDGET FY09
Personal Services	\$26,006,696	\$26,707,021	\$28,958,844
Materials and Supplies	\$411,981	\$163,028	\$162,587
Equipment, Lease, and Assets	\$3,252,349	\$1,296,045	\$703,950
Contractual and Other Services	\$4,812,124	\$5,372,945	\$5,764,278
Debt Service and Special Charges	0	0	0
	<hr/>	<hr/>	<hr/>
General Fund	\$34,483,150	\$33,539,039	\$35,589,659
Grant and Other Funds	0	0	0
ALL FUNDS	\$34,483,150	\$33,539,039	\$35,589,659

FULL TIME POSITIONS

Commissioned	48.0	51.0	47.8
Civilian	61.0	66.0	64.0
	<hr/>	<hr/>	<hr/>
ALL FUNDS	109.0	117.0	111.8

BUDGET INFORMATION FY 2009 | JULY 1, 2008 - JUNE 30, 2009

COMMUNITY POLICING

MISSION AND SERVICES

The mission of the Bureau of Community Policing is to provide uniformed patrol services to citizens of St. Louis. The bureau responds to citizen requests and interacts with neighborhood groups.

EXPENDITURE CATEGORY

	ACTUAL FY07	BUDGET FY08	BUDGET FY09
Personal Services	\$50,759,980	\$43,109,098	\$36,168,454
Materials and Supplies	\$186,843	\$106,305	\$36,705
Equipment, Lease, and Assets	\$44,536	0	0
Contractual and Other Services	\$56,503	\$750	\$750
Debt Service and Special Charges	0	0	0
	<hr/>	<hr/>	<hr/>
General Fund	\$51,047,862	\$43,216,153	\$36,205,909
Local Use Tax Fund	\$3,755,500	\$5,025,999	\$11,073,000
Grant and Other Funds	\$7,177,218	\$4,572,214	\$5,377,263
Riverfront Gaming Fund	\$1,350,000	\$1,350,000	\$2,350,000
Public Safety Fund	0	\$4,499,142	\$2,398,151
ALL FUNDS	\$58,225,080	\$47,788,367	\$57,404,323

FULL TIME POSITIONS

Commissioned - General Fund	1082.0	999.0	1060.2
Commissioned - Riverfront Gaming Fund	20.6	0.0	0.0
Commissioned - Grant and Other Funds	37.2	56.0	57.3
Civilian	40.0	33.0	36.0
ALL FUNDS	1180.0	1088.0	1153.4

BUDGET INFORMATION FY 2009 | JULY 1, 2008 - JUNE 30, 2009

BUREAU OF INVESTIGATION*

MISSION AND SERVICES

The Bureau of Investigation conducts criminal investigations concerning homicides, sex crimes, child abuse, domestic abuse, fraud, auto theft, bombing, arson, vice and narcotics.

* The Bureau of Investigation and the Bureau of Patrol Support merged on January 5, 2009 to form the Bureau of Investigation & Support. This budget is solely for the Bureau of Investigation.

EXPENDITURE CATEGORY

	ACTUAL FY07	BUDGET FY08	BUDGET FY09
Personal Services	\$13,218,121	\$12,856,945	\$13,142,818
Materials and Supplies	\$355,128	\$571,856	\$574,941
Equipment, Lease, and Assets	\$43,082	\$26,082	\$26,082
Contractual and Other Services	\$260,271	\$256,006	\$436,412
Debt Service and Special Charges	0	0	0
	<hr/>	<hr/>	<hr/>
General Fund	\$13,876,602	\$13,710,889	\$14,180,253
Grant and Other Funds	0	0	0
ALL FUNDS	\$13,876,602	\$13,710,889	\$14,180,253

FULL TIME POSITIONS

Commissioned	162.0	162.0	151.8
Civilian	114.0	116.0	115.0
	<hr/>	<hr/>	<hr/>
ALL FUNDS	276.0	278.0	266.8

BUDGET INFORMATION FY 2009 | JULY 1, 2008 - JUNE 30, 2009

PATROL SUPPORT*

MISSION AND SERVICES

The mission of the Bureau of Patrol Support is to provide tactical support through special operations to the Metropolitan Police Department.

* The Bureau of Investigation and the Bureau of Patrol Support merged on January 5, 2009 to form the Bureau of Investigation & Support. This budget is solely for the Bureau of Patrol Support.

EXPENDITURE CATEGORY

	ACTUAL FY07**	BUDGET FY08	BUDGET FY09
Personal Services	0	\$5,756,032	\$5,671,470
Materials and Supplies	0	\$92,708	\$81,171
Equipment, Lease, and Assets	0	\$26,318	\$27,181
Contractual and Other Services	0	\$87,162	\$70,121
Debt Service and Special Charges	0	0	0
General Fund	0	\$5,962,220	\$5,849,943
Grant and Other Funds	0	0	0
ALL FUNDS	0	\$5,962,220	\$5,849,943

FULL TIME POSITIONS

Commissioned	0.0	94.0	96.1
Civilian	0.0	7.0	7.0
ALL FUNDS	0.0	101.0	103.1

** In fiscal year 2007, funding for the Bureau of Patrol Support was included in the budget of the Bureau of Community Policing.

BUDGET INFORMATION FY 2009 | JULY 1, 2008 - JUNE 30, 2009
 AUXILIARY SERVICES

MISSION AND SERVICES

The Bureau of Auxiliary Services provides operations analysis, research, technical services, transportation, building maintenance and record maintenance to the Metropolitan Police Department.

EXPENDITURE CATEGORY

	ACTUAL FY07	BUDGET FY08	BUDGET FY09
Personal Services	\$10,704,201	\$10,866,083	\$11,711,618
Materials and Supplies	\$4,197,173	\$4,768,354	\$5,226,007
Equipment, Lease, and Assets	\$466,220	\$199,583	\$211,983
Contractual and Other Services	\$2,247,933	\$2,704,297	\$2,972,972
Debt Service and Special Charges	0	0	0
General Fund	\$17,615,527	\$18,538,317	\$20,122,580
Grant and Other Funds	0	0	0
ALL FUNDS	\$17,615,527	\$18,538,317	\$20,122,580

FULL TIME POSITIONS

Commissioned	8.0	8.0	8.0
Civilian	280.0	280.0	278.0
ALL FUNDS	288.0	288.0	286.0

BUDGET INFORMATION FY 2009 | JULY 1, 2008 - JUNE 30, 2009 PROFESSIONAL STANDARDS

MISSION AND SERVICES

The Bureau of Professional Standards is responsible for investigations of complaints brought against department employees. The Bureau also oversees the hiring and ongoing training of department employees.

EXPENDITURE CATEGORY

	ACTUAL FY07	BUDGET FY08	BUDGET FY09
Personal Services	\$4,717,945	\$4,356,389	\$5,213,257
Materials and Supplies	\$336,425	\$264,479	\$307,476
Equipment, Lease, and Assets	\$13,123	\$6,500	0
Contractual and Other Services	\$168,275	\$211,960	\$275,300
Debt Service and Special Charges	0	0	0
	<hr/>	<hr/>	<hr/>
General Fund	\$5,235,768	\$4,839,328	\$5,796,033
Grant and Other Funds	0	0	0
ALL FUNDS	\$5,235,768	\$4,839,328	\$5,796,033

FULL TIME POSITIONS

Commissioned	33.0	33.0	36.0
Civilian	16.0	15.0	15.0
	<hr/>	<hr/>	<hr/>
ALL FUNDS	49.0	48.0	51.0

GRANT ASSISTANCE | JAN. 01 - DEC. 31, 2009

GRANT/CONTRACT	AWARDING AGENCY	AMOUNT
ATF TASK FORCE	ATF	\$121,244
WELLS - GOODFELLOW INITIATIVE	ATF	\$8,158
DWI CRACKDOWN	CENTRAL MO. STATE UNIVERSITY	\$6,212
FITNESS CENTER FEES	CITIZENS USING ACADEMY FITNESS CENTER	\$10,750
ENFORCEMENT OF PROTECTION ORDERS	CITY OF ST. LOUIS FAMILY COURT	\$93,597
ST. LOUIS NITES BASKETBALL	CITY OF ST. LOUIS PARKS AND RECREATION	\$43,414
GUN & GANG SUPPRESSION	CITY OF ST. LOUIS PUBLIC SAFETY	\$21,592
JUVENILE ACCOUNTABILITY	CITY OF ST. LOUIS PUBLIC SAFETY	\$37,944
DEA TASK FORCE - GRANT 5703	DEA	\$144,055
OCDETF 257	DEA	\$159
OCDETF 260	DEA	\$923
OCDETF 274	DEA	\$2,059
OCDETF 287	DEA	\$6,501
OCDETF 290	DEA	\$16,240
OCDETF 294	DEA	\$3,083
DOWNTOWN ST. LOUIS PARTNERSHIP	DOWNTOWN ST. LOUIS PARTNERSHIP	\$84,570
JOINT TERRORISM TASK FORCE	FBI	\$15,811
VIOLENT CRIME/FUGITIVE TASK FORCE	FBI	\$148,818
WEED & SEED	FEDERAL WEED & SEED PROGRAM	\$45,966
FRED WEBER CONSTRUCTION	FRED WEBER CONSTRUCTION	\$7,058
METROLINK	METRO	\$590,937
POST COMMISSION	MISSOURI POST COMMISSION	\$38,704
DOMESTIC ABUSE RESPONSE TEAM	MISSOURI DEPT OF PUBLIC SAFETY	\$23,965
MISSOURI CRIME LAB UPGRADE	MISSOURI DEPT OF PUBLIC SAFETY	\$34,317
NARCOTICS CONTROL ASSISTANCE PROGRAM	MISSOURI DEPT OF PUBLIC SAFETY	\$156,878
NARCOTICS CONTROL ASSISTANCE PROGRAM-RECOVERY FUNDS	MISSOURI DEPT OF PUBLIC SAFETY	\$83,977
NARCOTICS CONTROL ASSISTANCE PROGRAM-SUPPLEMENT	MISSOURI DEPT OF PUBLIC SAFETY	\$27,091

GRANT ASSISTANCE | JAN. 01 - DEC. 31, 2009

GRANT/CONTRACT	AWARDING AGENCY	AMOUNT
UNDERAGE DRINKING	MISSOURI DEPT OF PUBLIC SAFETY	\$9,839
MIDWEST HIDTA	MISSOURI HIGHWAY PATROL	\$19,939
CONSTRUCTION WORK ZONE	MISSOURI HIGHWAY SAFETY	\$15,964
DRUG/HAZARDOUS MATERIAL INITIATIVE	MISSOURI HIGHWAY SAFETY	\$18,514
DWI SOBRIETY CHECKPOINTS	MISSOURI HIGHWAY SAFETY	\$473,286
MOTOR CARRIER SAFETY PROGRAM	MISSOURI HIGHWAY SAFETY	\$650,331
SEAT BELT ENFORCEMENT	MISSOURI HIGHWAY SAFETY	\$21,175
NFL FOOTBALL ESCORT	NFL FOOTBALL TEAMS	\$27,000
FINANCIAL CRIMES TASK FORCE	SECRET SERVICE	\$4,999
S. GRAND COMMUNITY IMPROVEMENT DISTRICT	S. GRAND IMPROVEMENT DISTRICT	\$27,918
BUFFER ZONE PROTECTION	STATE OF MO. HOMELAND SECURITY	\$264,815
ST. LOUIS BRIDGE CONSTRUCTION	ST. LOUIS BRIDGE CONSTRUCTION CO.	\$2,048
HOUSING UNIT POLICING SERVICES	ST. LOUIS HOUSING AUTHORITY	\$2,018,689
WAR (WE ARE RESPONSIBLE)	ST. LOUIS PUBLIC SCHOOLS	\$4,500
DNA BACKLOG 2008	U.S. DEPT OF JUSTICE	\$266,630
ANTI-GANG INITIATIVE	U.S. DEPT OF JUSTICE	\$116,287
ANTI-GANG INITIATIVE SOUTH PATROL	U.S. DEPT OF JUSTICE	\$74,685
COVERDELL 2008	U.S. DEPT OF JUSTICE	\$46,240
GANG RESISTANCE AND EDUCATION 2007	U.S. DEPT OF JUSTICE	\$35,153
GANG RESISTANCE AND EDUCATION 2008	U.S. DEPT OF JUSTICE	\$80,004
MO. INTERNET CRIMES AGAINST CHILDREN	U.S. DEPT OF JUSTICE	\$73,977
PROJECT SAFE NEIGHBORHOODS 2007	U.S. DEPT OF JUSTICE	\$88,527
PROJECT SAFE NEIGHBORHOODS 2008	U.S. DEPT OF JUSTICE	\$53,226
TARGETING VIOLENT CRIME INITIATIVE	U.S. DEPT OF JUSTICE	\$100,265
OPERATION FALCON	U.S. MARSHALS OFFICE	\$17,555
U.S. MARSHALS TASK FORCE	U.S. MARSHALS OFFICE	\$57,784

HONORING BRAVERY,
COURAGE AND DEDICATION

AWARDS

2009

MEDALS OF VALOR, DISTINGUISHED SERVICE CITATIONS OF VALOR & MERITORIOUS SERVICE CITATIONS

2009

MEDAL OF VALOR

Sponsored by the Crusade Against Crime of America and the St. Louis Area Police Chief's Association, the Medal of Valor is presented in recognition of a conspicuous act of bravery exceeding the normal demands of police service. It is the highest award given by the community.

DISTINGUISHED SERVICE CITATION OF VALOR

The Distinguished Service Citation of Valor is awarded to those who, in the line of duty, perform an act of outstanding bravery at the risk of imminent personal danger to his or her life. It is the highest award given by the department.

MERITORIOUS SERVICE CITATION

The Meritorious Service Citation is awarded to those who distinguish themselves in the face of personal danger and in doing so, bring credit to the police department by this highly creditable or unusual act performed in the line of duty.



SGT. JOHN APPLGATE
Distinguished Service Citation of Valor



SGT. SCOTT BOYHER
Medal of Valor
Meritorious Service Citation



SGT. HARVEY BURNETT
Medal of Valor
Meritorious Service Citation



P.O. DAVID CALCATERRA
Medal of Valor
Meritorious Service Citation



P.O. DUANE HOLLINSHED
Medal of Valor



P.O. CRAIG ROBERTSON
Medal of Valor
Meritorious Service Citation



DET. ROBERT SIMONS
Distinguished Service Citation of Valor



P.O. MATTHEW SIMPSON
Medal of Valor



P.O. EDGAR STEGALL
Medal of Valor



DET. SOLOMAN THURMAN
Medal of Valor
Meritorious Service Citation



P.O. ISHMAEL TYSON
Medal of Valor
Meritorious Service Citation



DET. FRANK WILLIAMS
Medal of Valor
Meritorious Service Citation

EMPLOYEES OF THE YEAR 2009



P.O. KYLE CHANDLER
Overall Officer of the Year
2009



P.O. JOSEPH R. HAMAN
Overall Officer of the Year
2009

OVERALL OFFICERS OF THE YEAR

Officers Kyle Chandler and Joseph Haman were strong leaders in the Fifth District in 2009. They made a total of 114 arrests, resulting in 121 felony charges. They were honored as the Fifth District's Officers of the Month in September 2009. Their work ethic was so impressive that in addition to winning the honor that month, they were also nominated four other times in 2009. They made several notable arrests in 2009, including the arrests of carjacking suspects who robbed their victims at gunpoint. Those suspects were located by Officers Chandler and Haman but fled. Officers Chandler and Haman were able to catch them and take them into custody. They were identified by the victims and warrants were issued. Officers Chandler and Haman each received a Chief's Letter of Commendation following the incident. In another incident, Officers Chandler and Haman arrested suspects

who were seen exchanging gunfire while driving. These suspects put the lives of countless innocent bystanders at risk but were locked up by Officers Chandler and Haman. Officers Chandler and Haman also made multiple other arrests for weapons and drug charges throughout 2009.

Both men were assigned to the 5th District following their graduations from the St. Louis Police Academy, with Officer Chandler graduating in July of 2008 and Officer Haman graduating in October of 2008. Prior to serving their community as police officers, both men served as United States Marines. Their tireless dedication to public safety makes them an example to their fellow officers and makes them worthy of this prestigious honor.



KARL D. JOHNSON
Overall Civilian of the Year
2009

OVERALL CIVILIAN OF THE YEAR

In 2009 the department reinstated the Officer Friendly program where St. Louis Police Officers visit elementary schools and talk with students. Sergeant Catherine Dennis knew Karl Johnson, then assigned to Mounted Patrol as a security guard, was a talented artist who previously created a children's coloring book for those who visited Mounted Patrol. She approached Karl and asked if he would be willing to do the same for the Officer Friendly program. Karl jumped at the chance, volunteering his time to do something he loved while also helping to pass along positive messages to children.

He created an impressive coloring book with vivid illustrations, diverse characters and an immense attention to detail, and he did it all on his own time. Though he was given some ideas about the structure of the book, Karl spent countless hours going above and beyond those ideas and making the book his own.

Karl has been a department employee for 14 years, having joined the department in 1995 as a custodian. In 2004, Karl received an Associate's Degree in Graphic Communication, no doubt using the skills he acquired in school to help make the Officer Friendly coloring book a success. Prior to joining the department, Karl served in the United States Navy. Karl's work symbolizes just how valuable civilian employees are to the department.



FALLEN OFFICERS MEMORIAL

MOURNING THE LOSS

POLICE OFFICER JULIUS K. MOORE

1985 - 2009

On October 6, 2009, Police Officer Julius K. Moore was responding to a call to assist his fellow Third District officers when his patrol vehicle collided with a tractor trailer. He was rushed to Saint Louis University Hospital where he remained in the Intensive Care Unit until succumbing to his injuries on October 15, 2009. He was 23 years old.

Officer Moore joined the department in April of 2007 as a Civilian Recruit in Training and on December 6, 2007, he fulfilled a lifelong goal of becoming a police officer when he graduated from the St. Louis Police Academy. He spent his entire commissioned career assigned to the Third District. He is survived by his wife, their three young children, his parents, a sister and other family and friends as well as his police family.

On Sunday, October 25, just one day after Officer Moore was laid to rest, a flag football game was held to benefit the fallen officer's family. Third District officers took on local business owners and employees from Joel's Shell Station. Officer Moore's fellow Third District officers prevailed 38-30. More than 2000 people attended the event that included entertainment by the marching band from Normandy High School, Officer Moore's alma mater.

The flag football event raised more than \$2200 in food sales alone for the Moore family. The Third District Police Partnership matched that amount. Donations from individuals and businesses throughout St. Louis continue to pour in.

Fellow officers noted Officer Moore's always positive attitude and his pride in his work. His promising career with the department was just beginning when his life was cut tragically short. The Metropolitan Police Department continues to offer deepest condolences and support to the entire Moore family.



Third District Officers participated in the benefit football game in honor of Officer Moore.



The Moore Family



The Normandy High School Marching Band

STREET NAMED IN HONOR OF FALLEN OFFICER REMEMBERING DETECTIVE GREGORY J. ERSON



The Erson Family at the Ceremony

Nearly three decades after the death of Detective Gregory J. Erson, the department joined his family and friends on March 21, 2009, as the 6200 to 6400 blocks of South Kingshighway were officially named "Gregory J. Erson Boulevard." This stretch of Kingshighway was chosen because it was the area in which Detective Erson resided with his wife and children at the time of his death.

On June 19, 1980, Detective Gregory J. Erson was working an undercover prostitution detail in the 4200 block of Westminster when he was shot. Detective Erson had made six arrests that night, but later, other officers assigned to the same undercover detail discovered him slumped over the front seat of his unmarked police vehicle. Detective Erson had been shot in the back. He was rushed to a local hospital where he died on the morning of June 20.

Investigators determined that Detective Erson had been shot during a robbery where the suspects took his department-issued gun, badge and wallet. Two suspects were arrested and charged with Capital Murder in connection with Detective Erson's death.

The family and friends of Detective Erson worked tirelessly to have the street named in his honor. The stretch of South Kingshighway which now bears Detective Erson's name, will serve as a permanent landmark that will forever commemorate his courage, dedication and service to the community.

The ceremony held the day of the dedication featured slideshows of Detective Erson at work, at play and with his family. Twenty-nine years after his death, Detective Erson's impact is still remarkable; the ceremony had a standing-room only crowd.

GREGORY J. ERSON
KINGSHIGHWAY

IN THE LINE OF DUTY 1863 - 2009

IN MEMORY OF THE 162 ST. LOUIS POLICE OFFICERS

WHO MADE THE ULTIMATE SACRIFICE IN THE PERFORMANCE OF DUTY

- | | | | | | |
|------|----------------------|------|-------------------------------|------|---------------------------|
| 1863 | Sgt. John Sturdy | 1919 | Thomas Ward | 1932 | George Schrameyer |
| 1868 | John Skinner | 1919 | Lt. William J. Smith | 1933 | Joseph Theobald Jr. |
| 1875 | John Cummings | 1919 | Louis H. Niederschulte | 1934 | Albert R. Siko |
| 1877 | John S. White | 1920 | Det. Sgt. James King | 1934 | James J. Carmody |
| 1879 | Charles Printz | 1920 | Sgt. Edward Dwyer | 1934 | William F. Cotter |
| 1880 | Michael Walsh | 1920 | Terence McFarland | 1936 | Sgt. William Cullen |
| 1881 | Patrick Doran | 1920 | Frank O. Reese | 1936 | Henry DeKeersgieter |
| 1883 | Sgt. P.M. Jenks | 1920 | Preston Anslyn | 1936 | Anthony Retkowski |
| 1890 | Louis H. Wilmers | 1920 | William A. Moller | 1937 | Det. Sgt. James Mobrak |
| 1890 | James Brady | 1920 | George E. Geisler | 1937 | Det. Sgt. Thomas Sullivan |
| 1893 | L.A. Boone | 1920 | Charles M. Daly | 1937 | Walter M. Bingham |
| 1894 | Sgt. Michael Gannon | 1921 | Michael J. Finn | 1939 | Harry Canton |
| 1897 | Nicholas Hunt | 1921 | John J. McGrath | 1941 | William E. Mears |
| 1900 | Dennis Crane | 1922 | Bernard C. Mengel | 1946 | Neal Courtney |
| 1900 | John Looney | 1922 | Michael O'Connor | 1948 | Raymond M. Hacker |
| 1900 | Nicholas Beckman | 1922 | Patrick Stapleton | 1948 | Edward Fabick |
| 1900 | Thomas J. Bolin | 1922 | Bernard T. Cook | 1949 | William O'Brien |
| 1901 | Richard Delaney | 1922 | Det. Sgt. Harry W. Lemkemeier | 1952 | Charles E. Voracek |
| 1901 | Michael J. Burke | 1923 | William C. Carroll | 1953 | Edward T. Burke |
| 1902 | Terrence J. Donnelly | 1923 | Joesph T. Staten | 1955 | Henry L. Eichelberger |
| 1902 | Michael Reedy | 1923 | Michael Haggerty | 1955 | Charles J Hogan |
| 1902 | William Boka | 1923 | Edward Kuehner | 1956 | Thomas P. Mulrooney |
| 1903 | Hugh McCartney | 1923 | John Flaherty | 1959 | Samuel J. Cheatham |
| 1903 | William Y. Hoagland | 1923 | William H. Anderson | 1963 | Donald C. Sparks |
| 1903 | Thomas Hadican | 1923 | Roger J. Harty | 1964 | Glennon R. Jasper |
| 1904 | Frank Ahern | 1923 | Lt. Sidney E. Sears | 1964 | Paul McCulloch |
| 1904 | Thomas Dwyer | 1923 | Peter A. Finnerty | 1964 | Paul Goldak |
| 1904 | John J. Shea | 1924 | Bernard Early | 1966 | Sgt. Harry W. Oebels |
| 1904 | James A. McClusky | 1924 | Sgt. Robert E. Woody | 1967 | Paul B. Oatman |
| 1906 | Humphrey O'Leary | 1924 | Fred W. Benz | 1969 | Brian M. Graft |
| 1907 | Lemuel R. Boyce | 1925 | John H. Bohlen | 1969 | Terry Scott Simmons |
| 1908 | Zeno Fults | 1925 | Charles B. Claggett | 1971 | Melvin Wilmoth |
| 1908 | Edward Dellmore | 1925 | Harry Wise | 1971 | Paul Kramer |
| 1911 | Cornelius O'Keefe | 1925 | Carl T. Hunt | 1972 | Frank G. Dobler |
| 1912 | Louis Schnarr | 1925 | John H. Grogan | 1972 | Harold E. Warnecke |
| 1912 | Arthur M. Huddleston | 1925 | James H. Mateer | 1973 | John L. Summers |
| 1913 | Martin Kilroy | 1926 | William Sass | 1973 | Aloysius J. Nelke |
| 1914 | William H. Shaiper | 1926 | Frank H. Kohring | 1974 | Claude C. Smith |
| 1914 | Charles J. Benderoth | 1926 | Eugene N. Lovely | 1975 | Louis D. Sebold |
| 1914 | Henry S. Smith | 1927 | Det. Sgt. Edward Lally | 1979 | Sgt. William Campbell |
| 1915 | Sgt. Michael Gibbons | 1927 | Det. Sgt. Edward Schaaf | 1980 | Gregory Erson |
| 1915 | Edward G.J. Spilcker | 1927 | Douglas Chamblin | 1985 | Johnnie C. Corbin |
| 1915 | Leo Kraeger | 1927 | Oliver W. Cook | 1989 | Michael McNew |
| 1915 | Charles F. Barmeier | 1928 | Paul L. Meyer | 1990 | Lorenzo Rodgers |
| 1916 | John McKenna | 1928 | Joseph P. McGovern | 1993 | Stephen Strehl |
| 1916 | William Dillon | 1929 | John Walsh | 1994 | Todd Meriwether |
| 1916 | Louis G. Robers | 1929 | Roy Berry | 2000 | Robert J. Stanze II |
| 1916 | Edward O'Brien | 1929 | Joseph Meier | 2002 | Michael J. Barwick |
| 1917 | Issac Kidwell | 1929 | William McCormack | 2003 | James W. Branson Jr. |
| 1917 | Julius H. Petring | 1930 | Edward Schnittker | 2004 | Nicholas K. Sloan |
| 1917 | Charles B. Redmond | 1931 | Harry Stussie | 2007 | Stephen R. Jerabek |
| 1918 | Andrew M. Lawrence | 1931 | Sgt. Adolph Kreidler | 2007 | Norvelle T. Brown |
| 1918 | August Schwind | 1931 | Sgt. Jeremiah O'Connor | 2008 | Sgt. Jeffry Kowalski |
| 1919 | William F. Hayes | 1931 | George Moran | 2009 | P.O Julius K. Moore |

**PUBLISHED BY THE METROPOLITAN POLICE DEPARTMENT,
CITY OF ST. LOUIS' PUBLIC INFORMATION DIVISION:**

ERICA S. VAN ROSS
Director of Public Information

SCHRON Y. JACKSON
Public Information Manager

KATHLEEN O. O'SULLIVAN
Special Events Coordinator/Web Content Developer

MICHELLE R. ROBERTSON
Administrative Clerk

WITH ASSISTANCE FROM:
*Crime Analysis Unit
Information Technology
Planning & Research*

TRACI MOORE GRAPHICS
Art Direction & Design





SERVICE
INTEGRITY
LEADERSHIP
FAIR TREATMENT
TO ALL

METROPOLITAN POLICE DEPARTMENT, CITY OF ST. LOUIS

1200 CLARK AVENUE

ST. LOUIS, MISSOURI 63103

WWW.SLMPPD.ORG

EMERGENCIES 911

NON-EMERGENCIES 231-1212